

XLr8Tools

BUILT ON
eclipse

Installation Guide

A  PUBLICATION

© 2006-2019, U2logic, Inc.
All Rights Reserved.

XLr8 Tools Installation Guide

Version 4.8
Created November 2005
Updated May 1, 2019

Printed in the United States of America
U2logic, 3001 Brighton Blvd, Denver, Co 80216

This product and its documentation are protected by copyright and are distributed with licensed copies of the respective software system. This document and the confidential information contained within it may in no part be distributed, reproduced, stored in or introduced into a retrieval system, or transmitted in any form or means without the express written permission of U2logic, Inc.

U2logic is not responsible for errors or omissions in this guide. U2logic reserves the right to change the information described herein at any time without notification.

I. Prerequisites

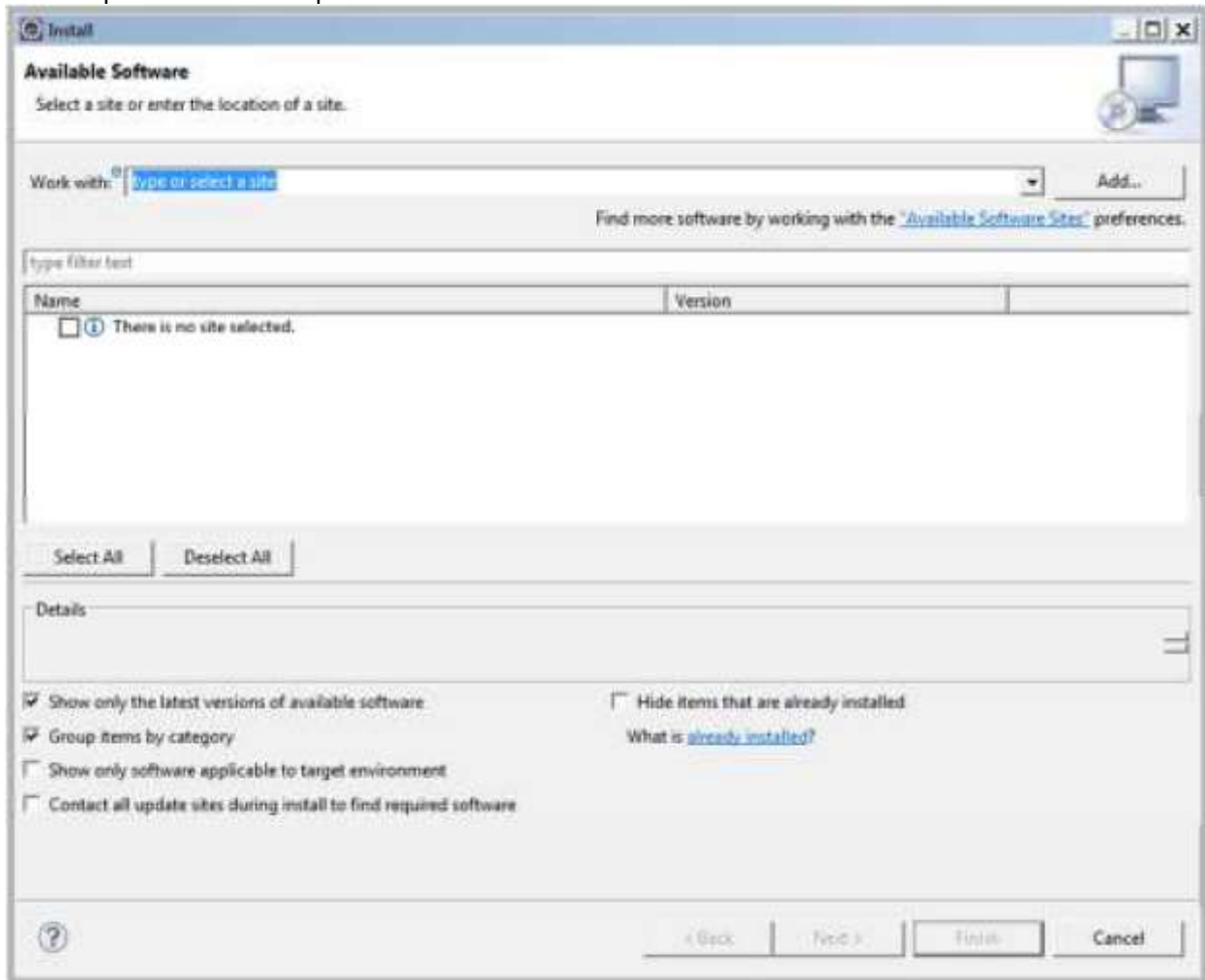
In order to use the XLr8Editor you will need the following software installed:

1. JRE 8 or higher from <http://java.com>
2. Eclipse 2019-03 or higher from <http://www.eclipse.org/downloads/>. (Eclipse Classic or Eclipse IDE for Java Developers)

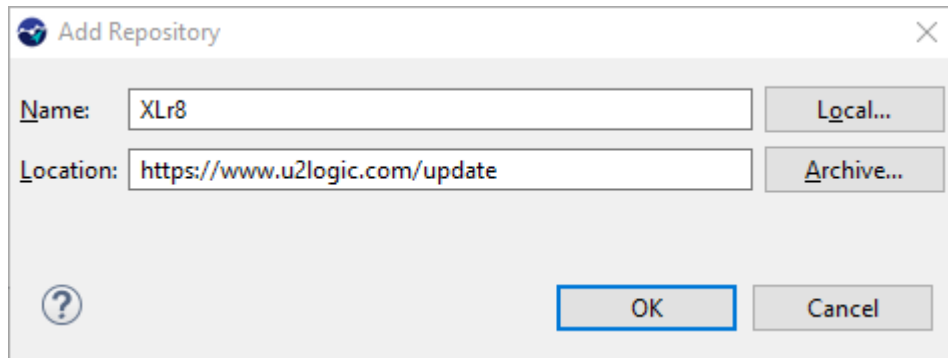
II. Install the XLr8 Tools

Once you have installed both the JRE and Eclipse, you are ready to start installing the XLr8Editor. The XLr8Editor is distributed via an update site that allows you to easily install and receive updates to the editor.

1. Start Eclipse and select Help->Install New Software...



2. Select Add button to get this dialog box and fill it in as shown.



3. Pick the XLr8 site you just keyed in and click the Current Licensed Products option and press the Next button

The screenshot shows the 'Install' window with the following components:

- Available Software:** Check the items that you wish to install.
- Work with:** XLr8 - <https://www.u2logic.com/update>
- Find more software by working with the "Available Software Sites" preferences.**
- type filter text:** (empty)
- Software List:**

Name	Version
<input checked="" type="checkbox"/> U2logic XLr8 Products	
<input checked="" type="checkbox"/> U2logic U2 Core	4.8.21
<input checked="" type="checkbox"/> U2logic XLr8 Command Interpreter	4.8.21
<input checked="" type="checkbox"/> U2logic XLr8 Developer	4.8.21
<input checked="" type="checkbox"/> U2logic XLr8 Editor	4.8.21
<input checked="" type="checkbox"/> U2logic XLr8 Framework	4.8.21
<input checked="" type="checkbox"/> U2logic XLr8 Installer	4.8.21
<input checked="" type="checkbox"/> U2logic XLr8 Licenser	4.8.21
<input checked="" type="checkbox"/> U2logic XLr8 Reporter	4.8.21
<input checked="" type="checkbox"/> U2logic XLr8 Reporter PCL Emitter Extension	4.8.21
<input checked="" type="checkbox"/> U2logic XLr8 Reporter UI Extension	4.8.21
<input checked="" type="checkbox"/> U2logic XLr8 Resizer	4.8.21
<input checked="" type="checkbox"/> U2logic XLr8 Synchronizer	4.8.21

Un-check these options if you do not have BIRT installed

Select All **Deselect All** 12 items selected

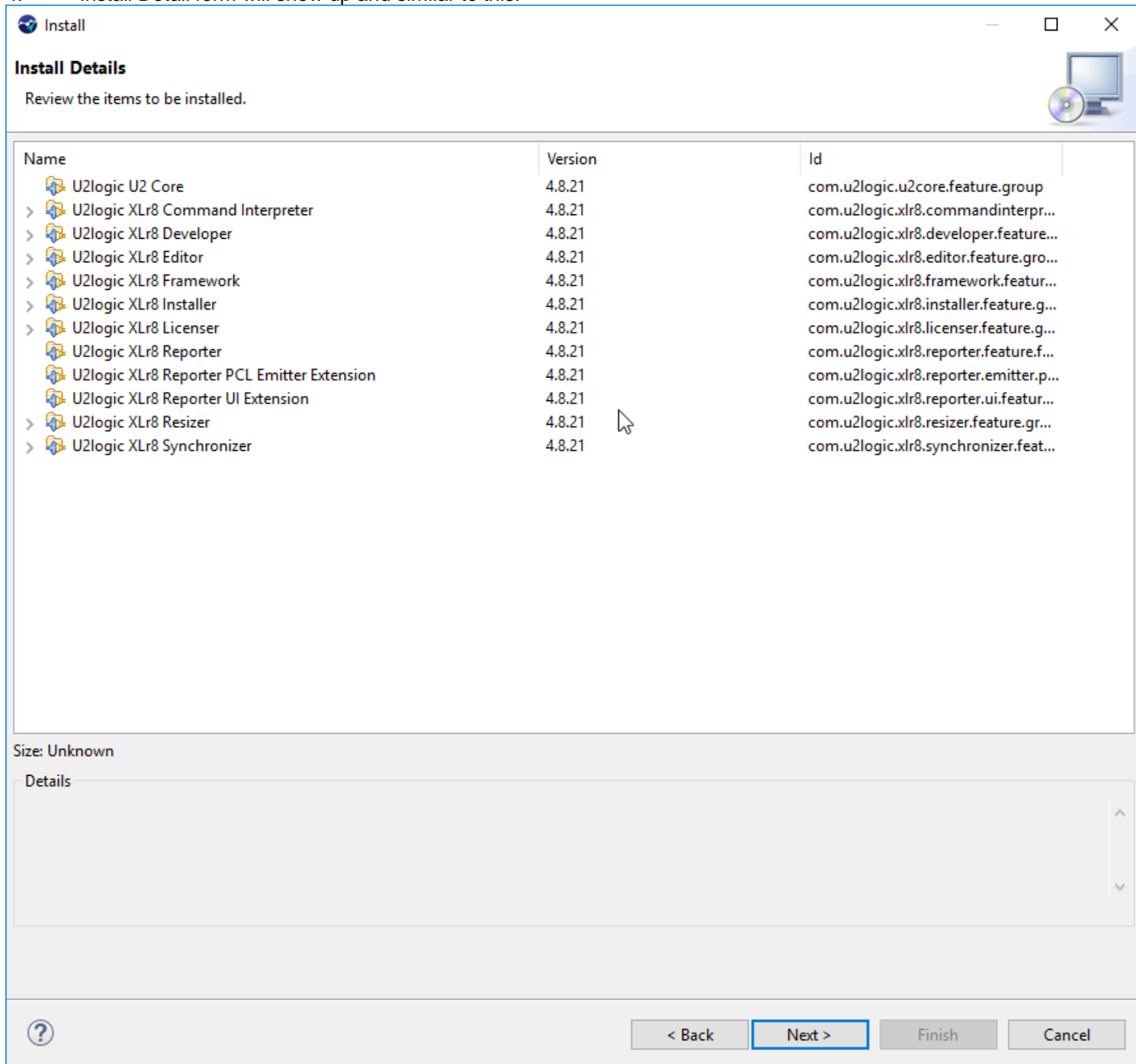
Details

- Show only the latest versions of available software
- Hide items that are already installed
- Group items by category
- Show only software applicable to target environment
- Contact all update sites during install to find required software

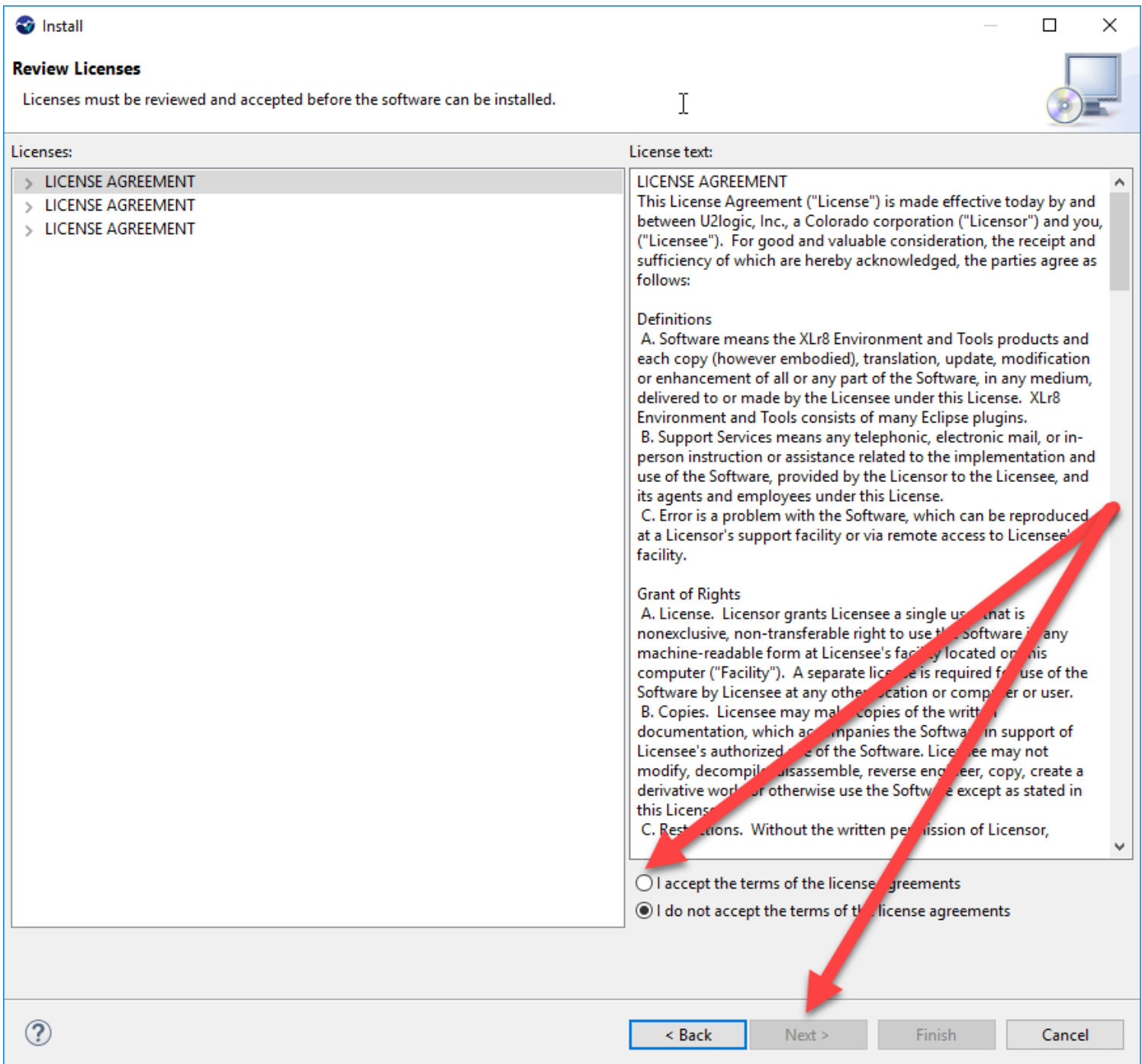
What is [already installed?](#)

< Back **Next >** **Finish** **Cancel**

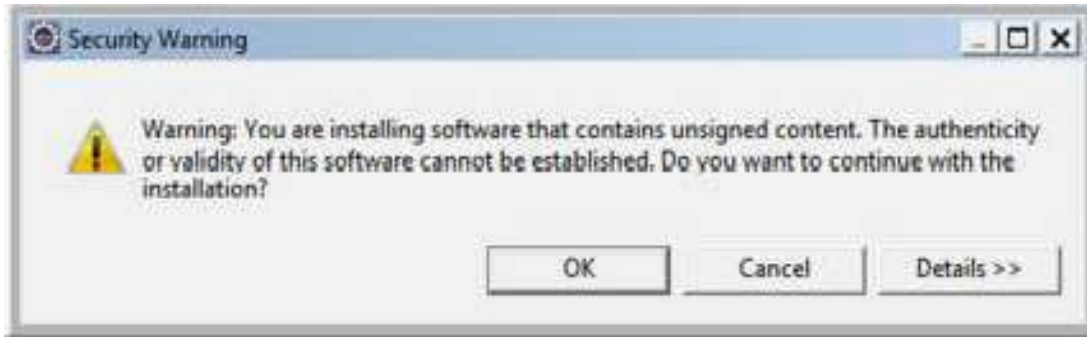
4. Install Detail form will show up and similar to this.



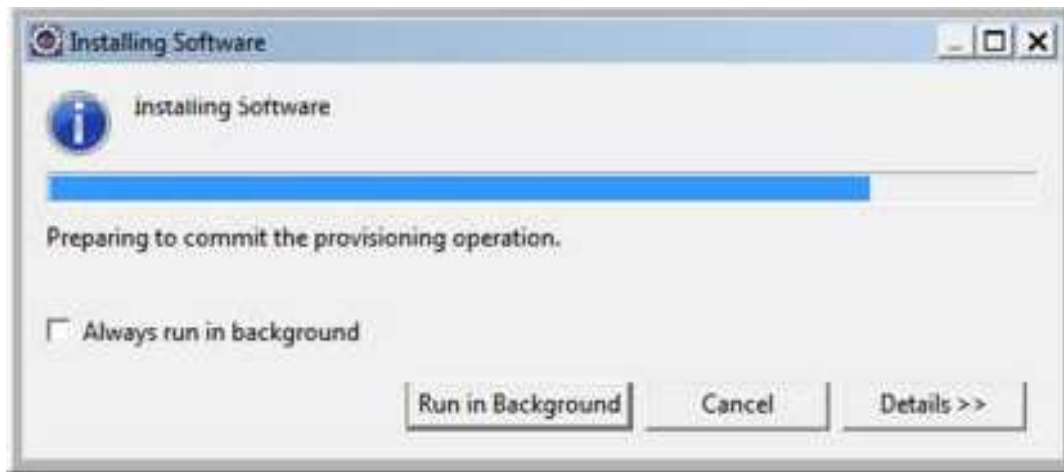
5. Read and click to accept the license agreement. Click Next to continue with the installation.



6. Click OK to continue with installation



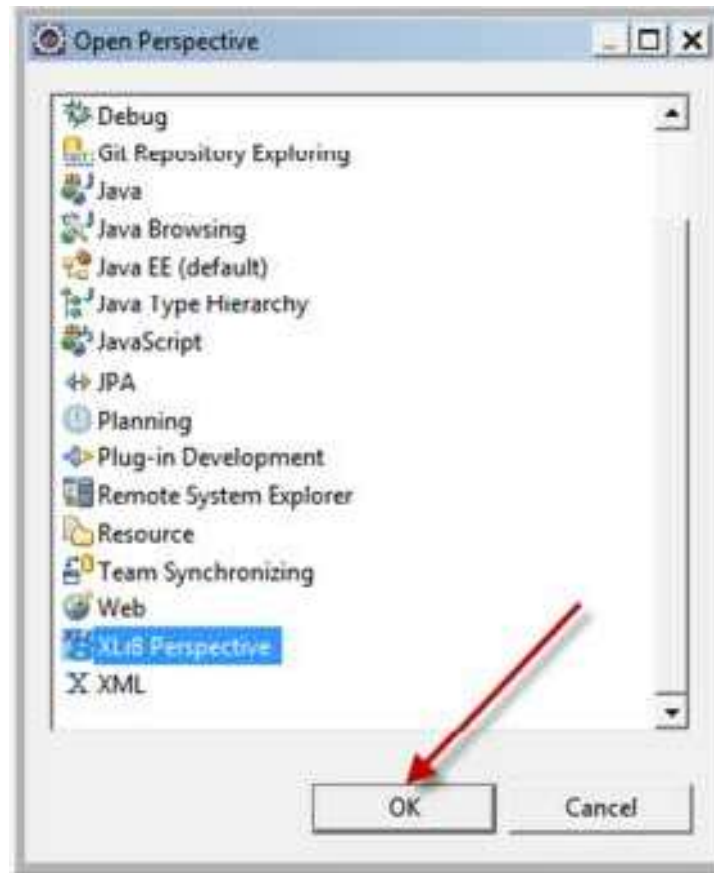
7. This dialog box should come up if this is a new installation and you have not clicked "Run in Background"



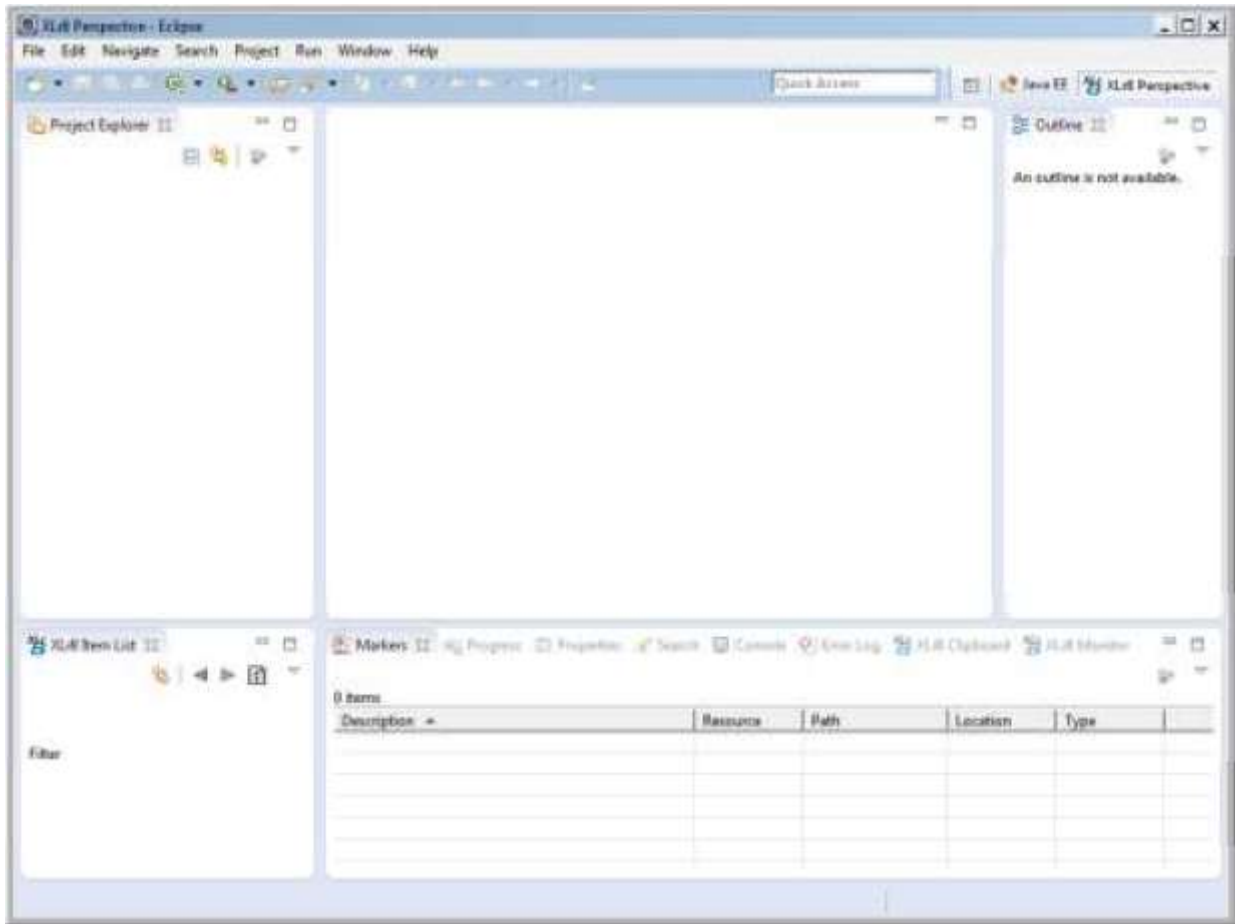
8. Click Restart Now button



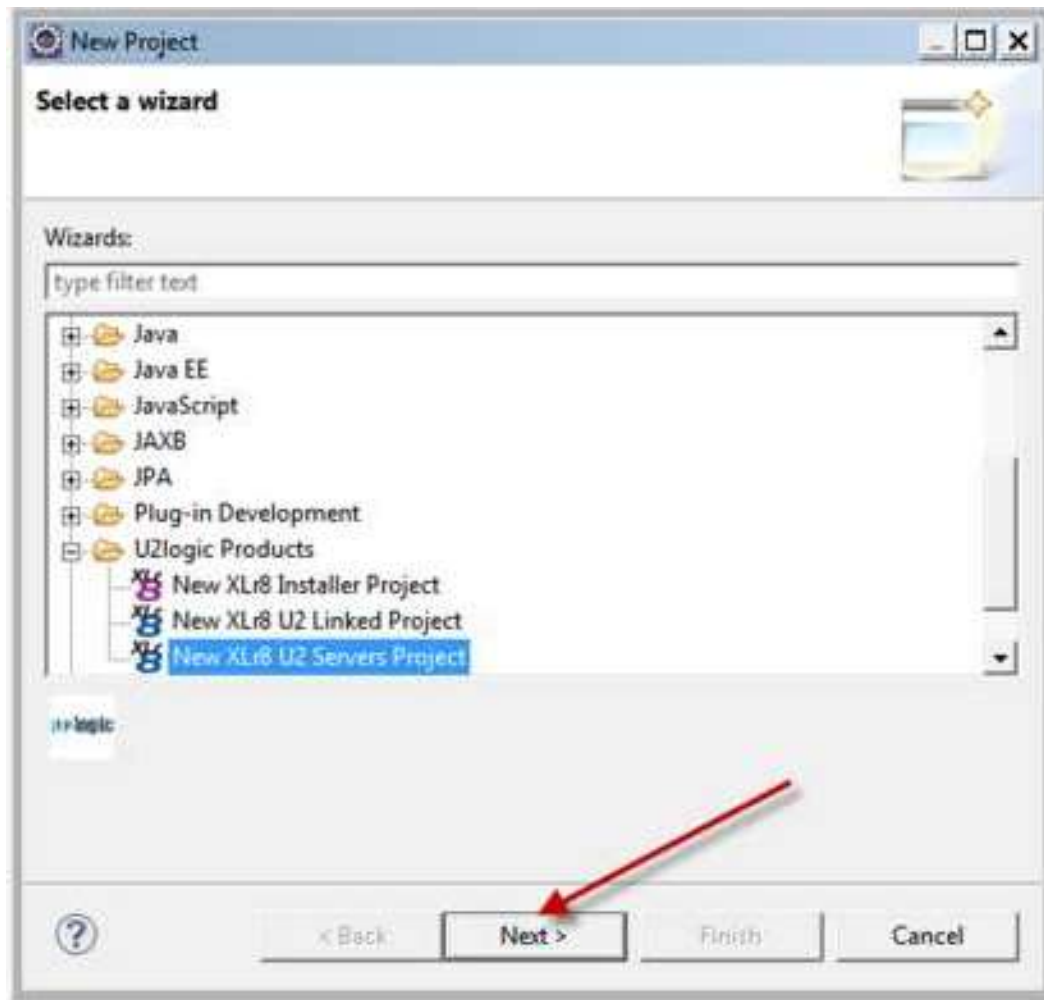
9. After restarting go to the Eclipse menu item at Select Window -> Open Perspective -> Other, click on XLr8 Perspective and click the Ok button.



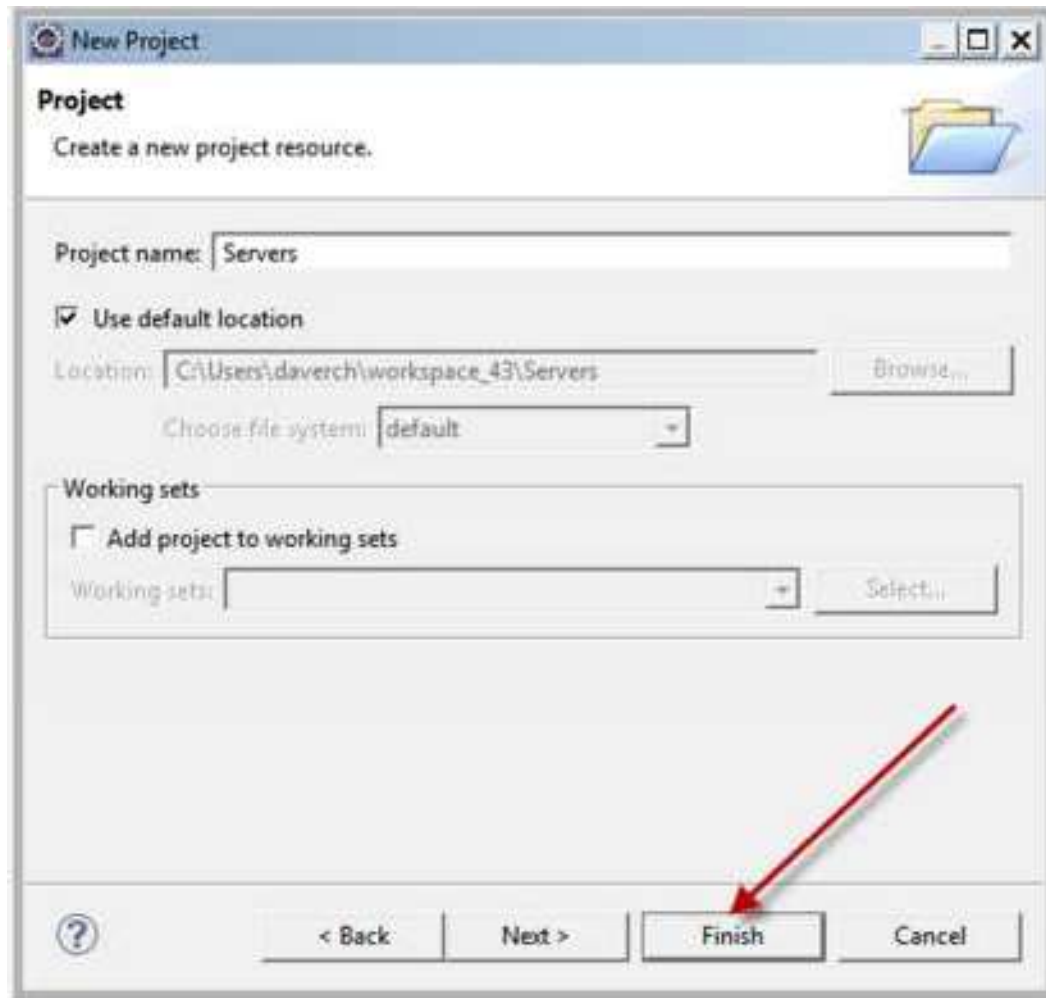
10. Click on the XLr8Perspective icon to get this window.



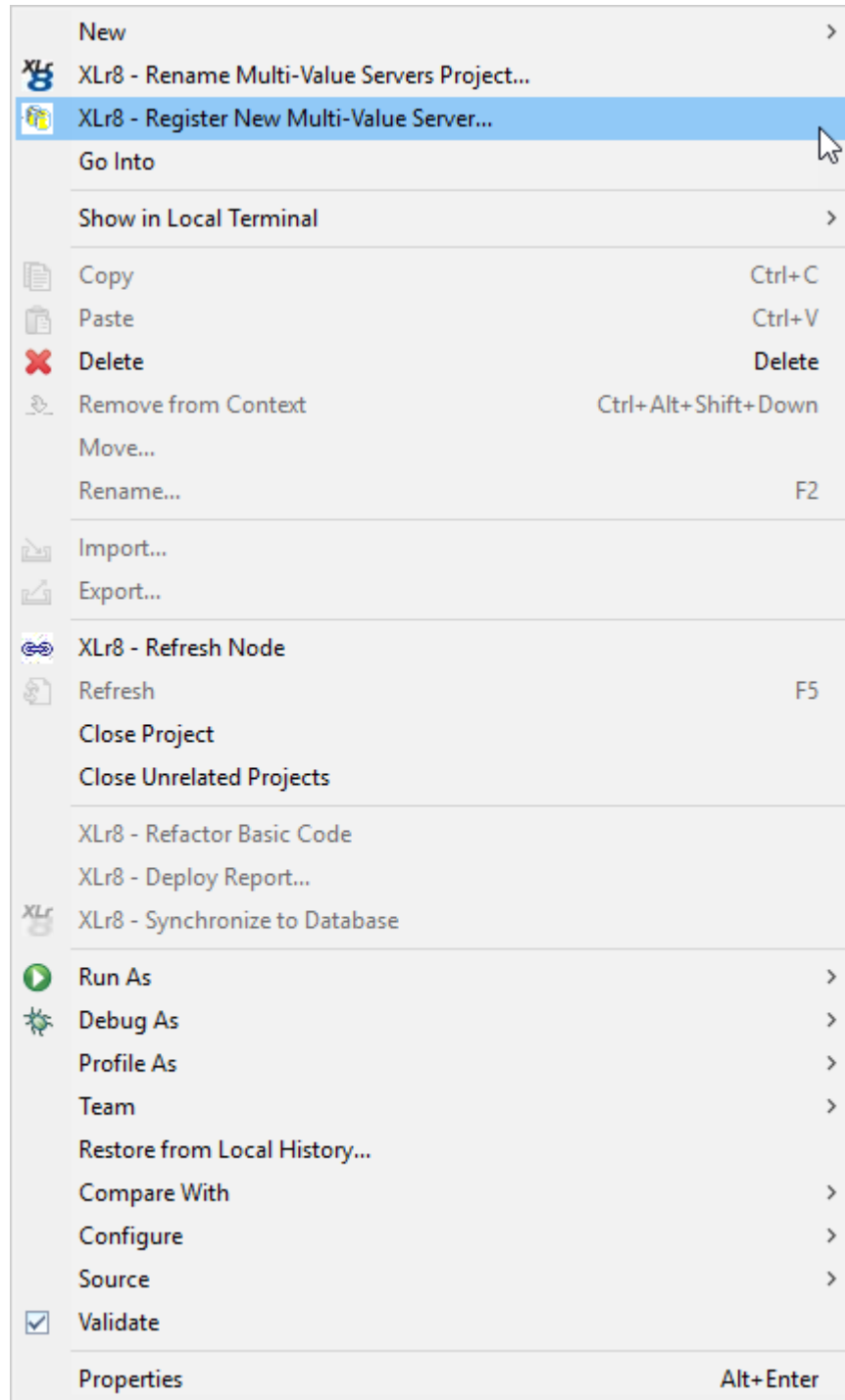
11. Select File -> New -> Project click to open XLR8Wizards to open the tree up. Now click on the New XLR8 U2 Servers Project. Click on the Next button.



12. Enter the name Servers in the Project Name. The project must be called "Servers" or you will get an error when you register your first server. Now, click on the finish button.



13. Right click on the Servers project in the Project Explorer window. The select XLr8 – Register New MV Server



14. Enter the information to register your server. You should click on Validate Credentials. If that should fail then you have diagnose whether UniObjects is running and you have access to that server. Now click on the Finish button to add this server

The screenshot shows a Windows-style dialog box titled "Register New Multi-Value Server". Below the title bar, it says "This wizard allows you to register a new Multi-Value Server". The form contains several input fields: "Server Name" with the value "Universe", "Host Name" with "www.u2logic.com", "Host Port" with "31438", "User Name" with "administrator", "Password" and "Password verify" both filled with dots. There is a "Save Password" checkbox which is checked. Below these is a "Server Type" section with five radio button options: "U2 autodetect", "U2 UniData", "U2 UniVerse" (which is selected and has a dashed border), "OpenQM", and "D3". At the bottom left is a help icon (a question mark in a circle), and at the bottom right are "Finish" and "Cancel" buttons.

15. Right click on your server to register an account.



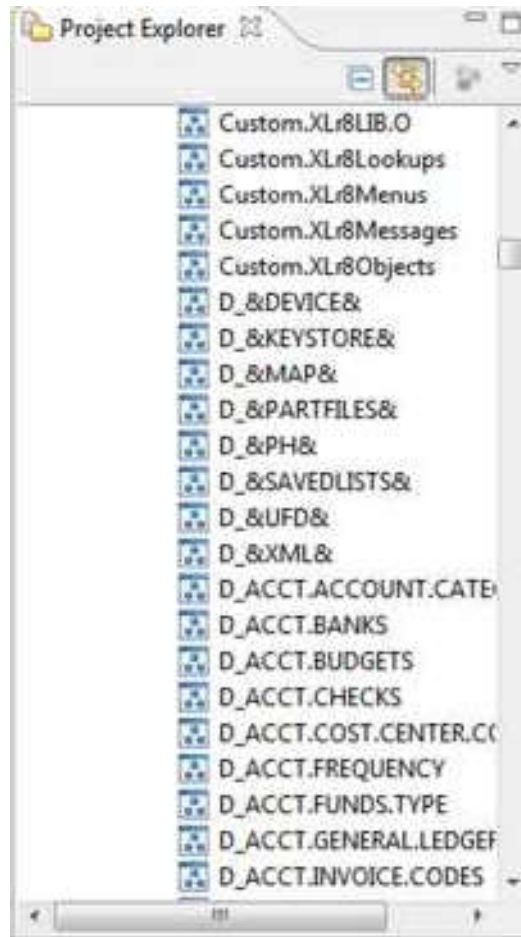
16. Register your MV account. XLR8 plug-in does read the Universe UV.ACCOUNT file so a path is not required on Universe but the patch is required on UniData registrations. No path is need on D3 installations however MVSP is required to be installed to be able to access D3 data.



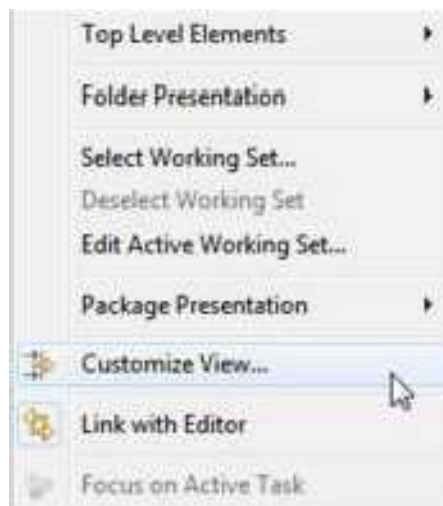
17. Now you are ready to use XLR8Editor on this account. You just need to double click on the account or use the plus sign to open all of the files here.



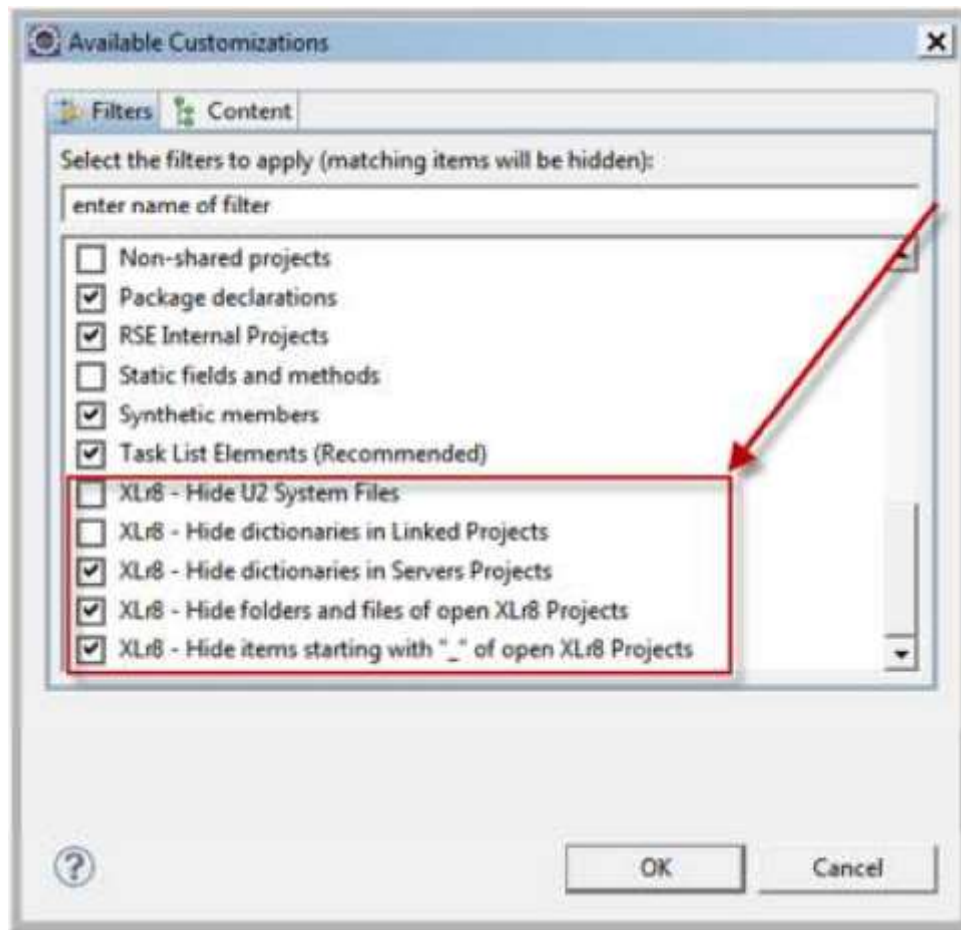
18. In the panel below you can see dictionaries.



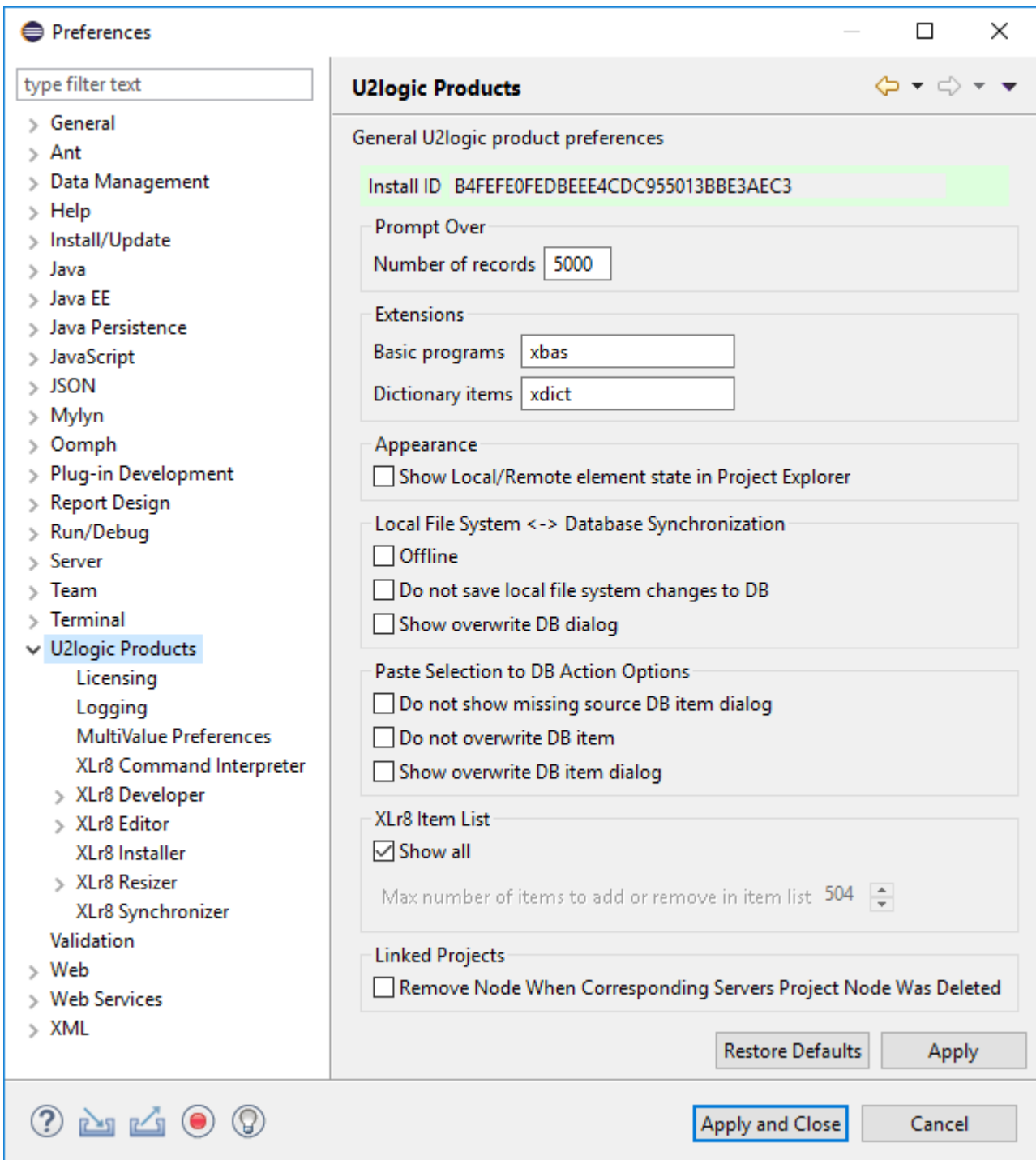
19. To filter them out you must click on the down arrow in the Project Explorer:



20. Click the check box Hide dictionaries to not see the dictionaries in your project explorer. Also, you can click on the box to hide U2 System files to further reduce you list of files.



21. Your Install Identification is at Window -> Preferences -> U2logic Products. . Email your Install ID to support@u2logic.com with what product you would like to license in the subject. U2logic will email you back a license key for the product you requested.



21. Copy and paste your license key into Window -> Preferences -> U2logic Products -> Combined Licensing your received a key for. Click okay and you are ready to use the premier Eclipse plug-ins for U2 databases.

