

XLr8Editor

BUILT ON
eclipse.

Using Search

A **U2logic** PUBLICATION

© 2010-2012, U2logic, Inc.
All Rights Reserved.

XLr8Editor Users Guide

Doug Averch

Version 1.0
Created April 2010
Updated April 26, 2012

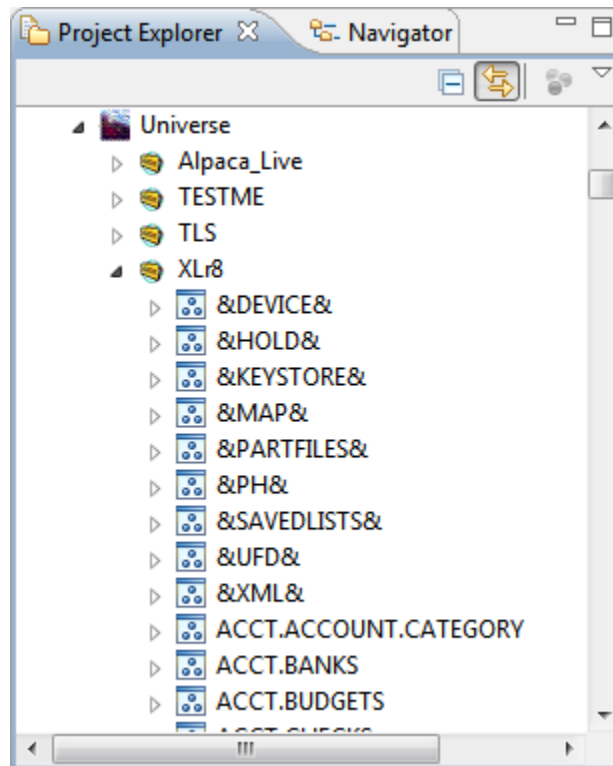
Printed in the United States of America
U2logic, 13963 Powhaton Road, Brighton, Colorado 80603

This product and its documentation are protected by copyright and are distributed with licensed copies of the respective software system. This document and the confidential information contained within it may in no part be distributed, reproduced, stored in or introduced into a retrieval system, or transmitted in any form or means without the express written permission of U2logic, Inc.

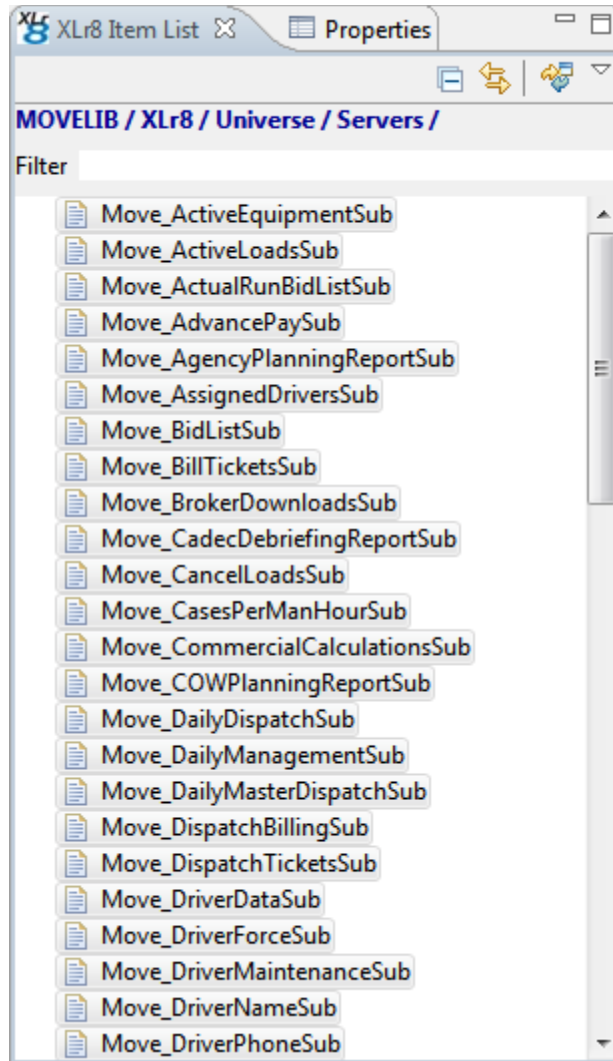
U2logic is not responsible for errors or omissions in this guide. U2logic reserves the right to change the information described herein at any time without notification.

I. Copy Files Locally

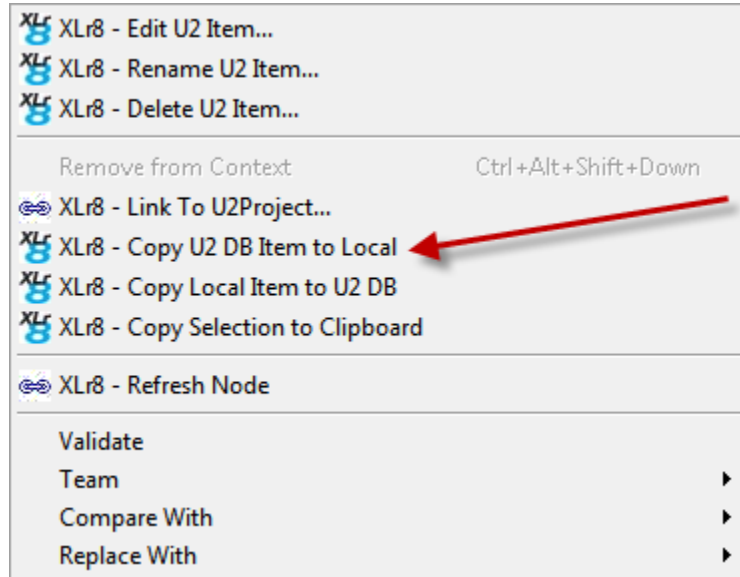
- a. The Project Explorer is where you would start to find a program to edit. Double click on the account you want open up



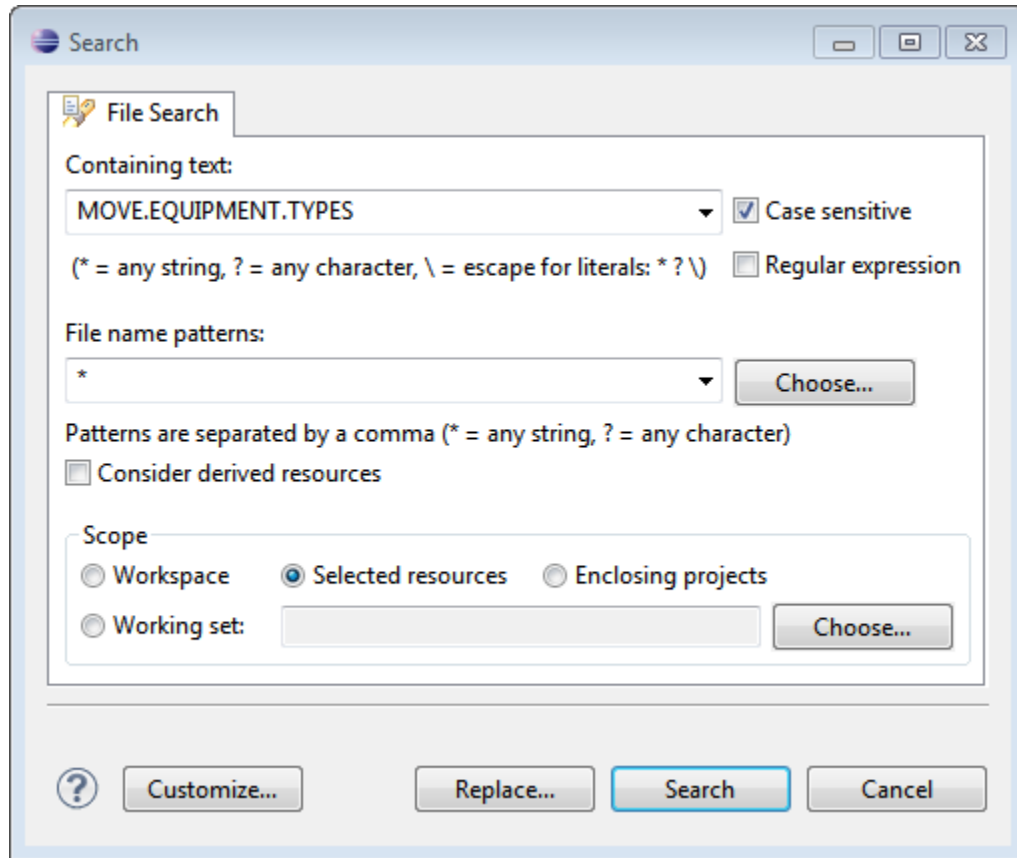
- b. Then double click on the file name. In this case we are using MOVELIB. There is a panel called Xlr8 Item List that looks like this. You then highlight all of the items in the list.



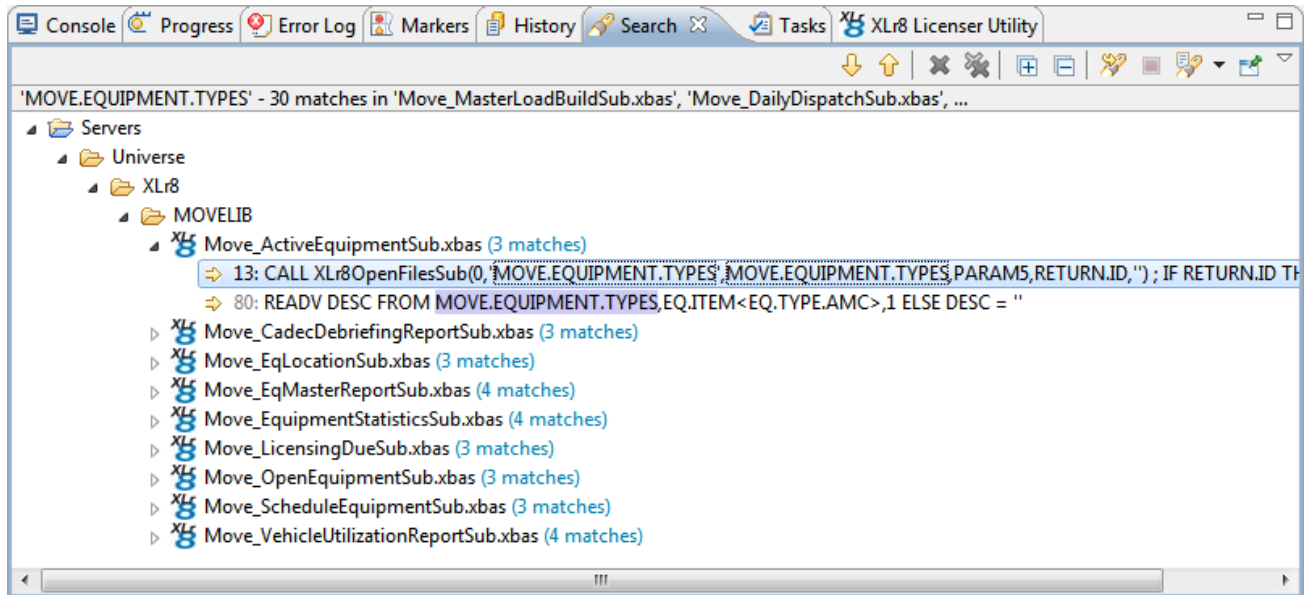
- c. Right click on the item list to get this menu. Pick the Copy U2 DB Item to Local option have all of the programs copied in locally.



- d. After the copying is completed click on the Search menu to bring up this wizard. You can fill in the containing text and make sure you use check the radio button Selected resources. Now you can click the Search button.



- e. After the search is complete you can find your search panel for your results. Each program



- f. Now you can click on the specific line from the search results and that will open the program and allow you to edit that specific line.

```

Move_ActiveEquipmentSub
68 HEAD.COLUMN := \</tr>\ ; * End column headin
69 LINE = 'SELECT MOVE.EQUIPMENT WITH CURRENT.LOAD.ID # "" BY TYPE'
70 EXECUTE LINE CAPTURING OUTPUT
71 CNT = 0 ; CLASS = ""
72 GOSUB LOAD.HEADING ; * Print heading in
73 LOOP WHILE READNEXT ID
74 IF LINE.CNT > MAX.LINE THEN GOSUB LOAD.HEADING
75 READ EQ.ITEM FROM MOVE.EQUIPMENT, ID ELSE CONTINUE
76 TEMP = \<A HREF="\:PATH.INDENT:\Move_Equipment?action=ReadData&IdCode=\:ID:\">\:ID
77 IF CLASS = 'DataTableNone' THEN CLASS = 'DataTableBody' ELSE CLASS = 'DataTableNon
78 HTML := \<tr class=\:CLASS:\>\ ; * Change row color
79 HTML := '<td>':TEMP:'</td>'
80 READV DESC FROM MOVE.EQUIPMENT TYPES, EQ.ITEM<EQ.TYPE.AMC>, 1 ELSE DESC = ''
81 HTML := '<td>':DESC:'&nbsp;&nbsp;&nbsp;</td>'
82 LD.ID = EQ.ITEM<EQ.CURRENT.LOAD.ID.AMC>
83 READ LD.ITEM FROM MOVE.LOADS, LD.ID ELSE LD.ITEM = ''
84 TEMP = \<A HREF="\:PATH.INDENT:\Move_Dispatch.html?action=ReadData&IdCode=\:LD.ID:
85 HTML := '<td>':TEMP:'</td>'
86 HTML := '<td align=center>':LD.ITEM<LD.ROADNET.ID.AMC>:'</td>'
87 HTML := '<td align=center>':OCONV(LD.ITEM<LD.DISPATCH.DATE.AMC>, 'D4/'): '</td>'
88 HTML := \</tr>\ ; * End of row
89 CNT += 1 ; LINE.CNT += 1 ; * Increment count f
90 REPEAT
91 HTML := \<tr><td colspan=99 class=DataTableReportFoot><div class=FloatLeft>\:CNT:\ re
92 HTML := \<div class=FloatRight>\
93 HTML := \@2001-2009, U2logic, Inc. All Rights Reserved.</div></td></tr></table>\
94 RETURN
95 LOAD.HEADING:*
96 IF PAGE.NO > 1 THEN
97 HTML := \</table><h4>&nbsp;&nbsp;&nbsp;</h4><table class=DataTable>
98 END
99 HTML := HEAD.HTML.START:DIV.FILTER:PAGE.NO:\')"></div>\:DIV.TIMEDATE
100 HTML := DIV.PAGENO:PAGE.NO:"</div>":DIV.REPORTNAME:'</td></tr>'
101 HTML := FILTER.LINE.LEFT:PAGE.NO:FILTER.LINE.RIGHT
102 HTML := HEAD.COLUMN
103 PAGE.NO += 1
104 LINE.CNT = 3
105 RETURN
    
```