

# XLr8Editor



## Users Guide

---

A  PUBLICATION

© 2010-2012, U2logic, Inc.  
All Rights Reserved.

## **XLr8Editor Users Guide**

Doug Averch

Version 2.0  
Created April 2010  
Updated January 4, 2013

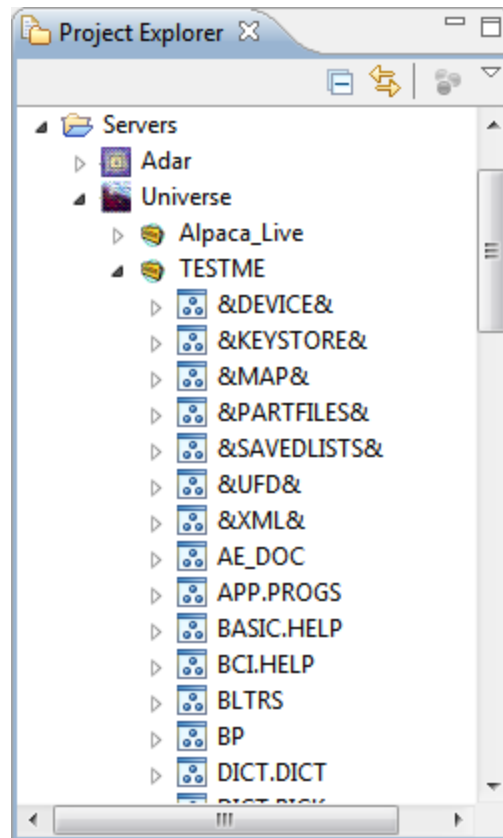
Printed in the United States of America  
U2logic, 13963 Powhaton Road, Brighton, Colorado 80603

This product and its documentation are protected by copyright and are distributed with licensed copies of the respective software system. This document and the confidential information contained within it may in no part be distributed, reproduced, stored in or introduced into a retrieval system, or transmitted in any form or means without the express written permission of U2logic, Inc.

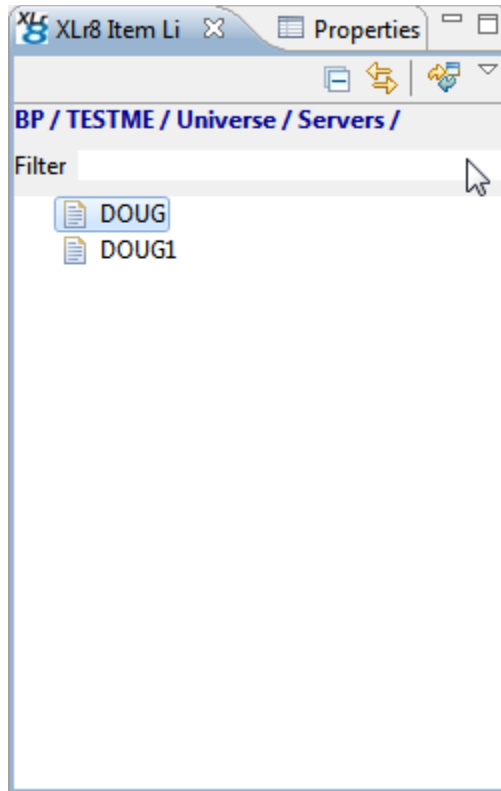
U2logic is not responsible for errors or omissions in this guide. U2logic reserves the right to change the information described herein at any time without notification.

## I. Editing a Program

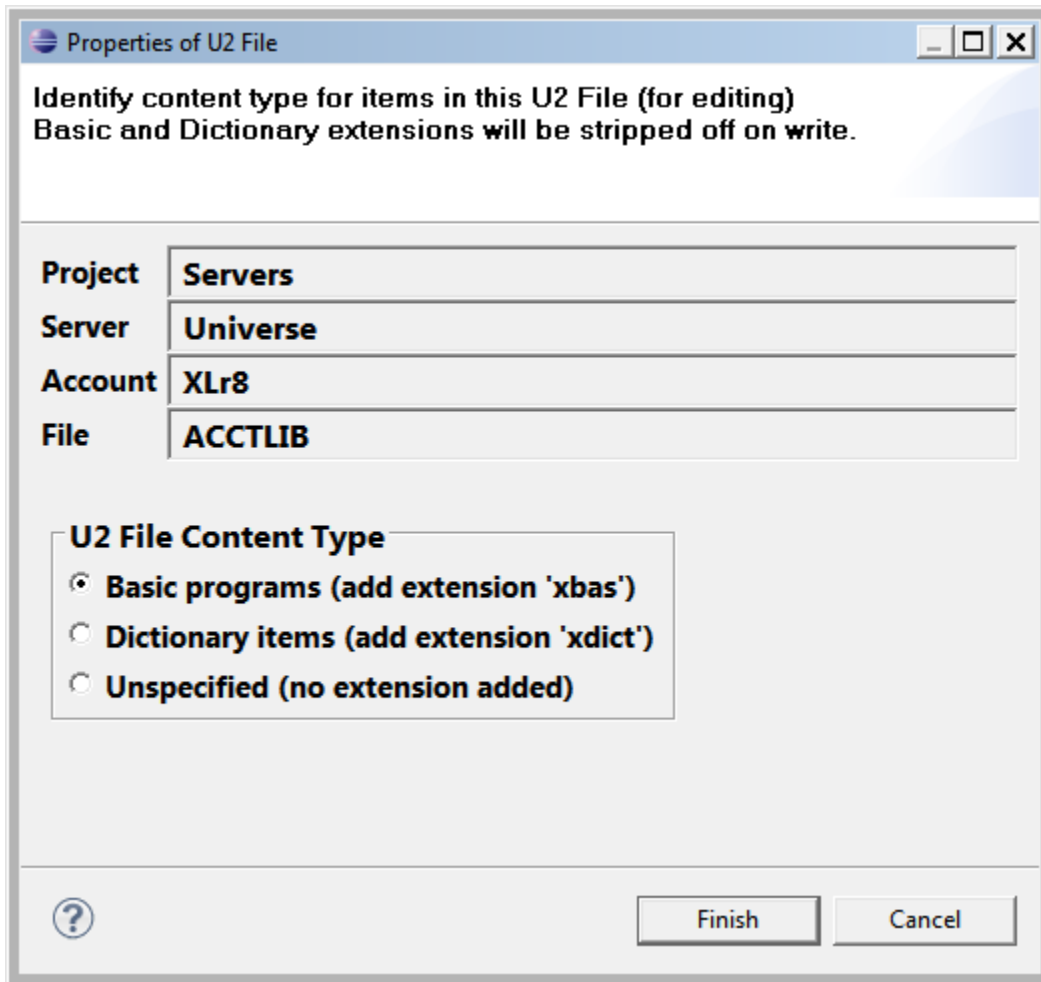
- a. The Project Explorer is where you would start to find a program to edit.  
Double click on the account you want open up



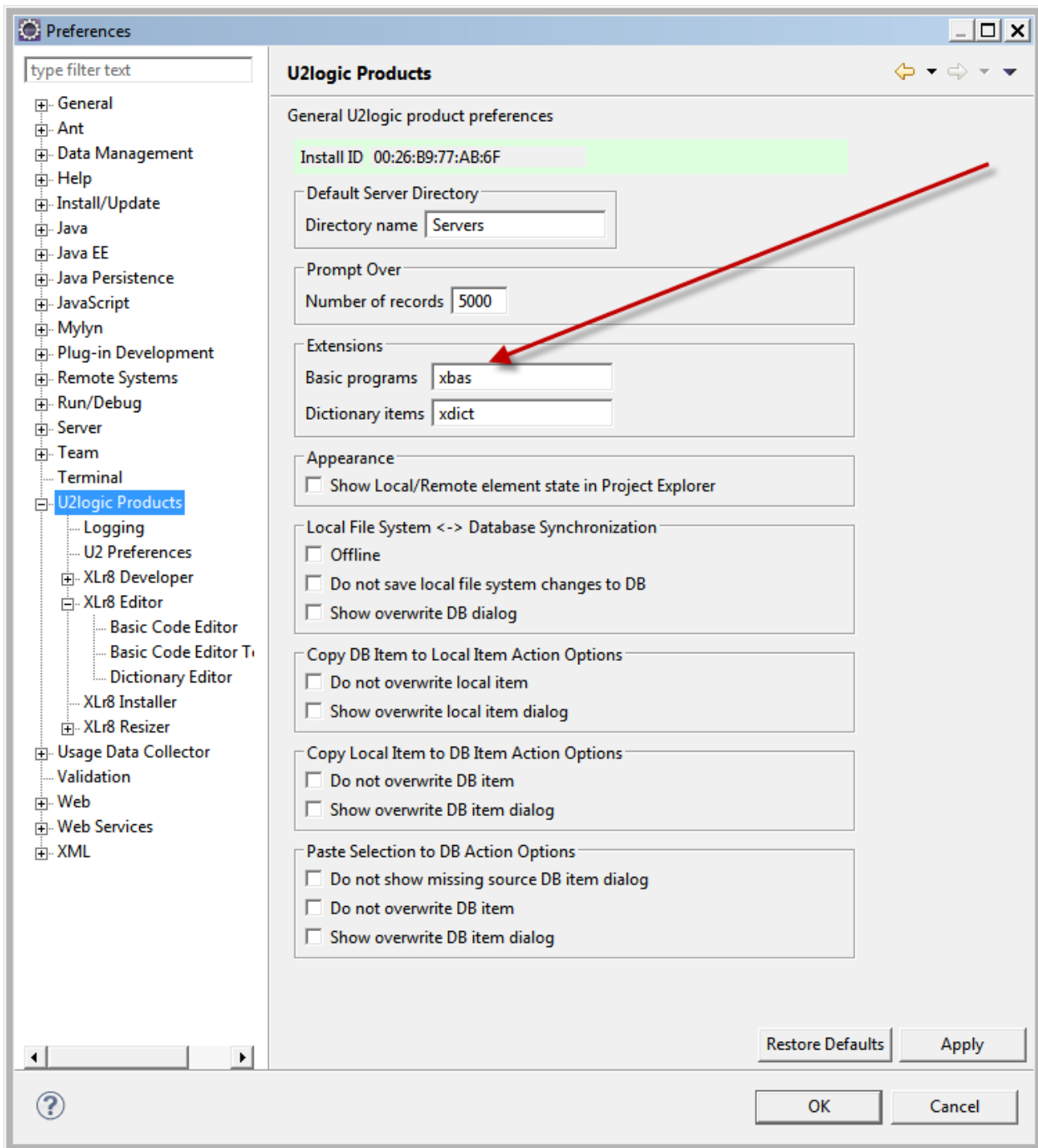
- b. Then double click on the file name. In this case we are using BP. There is a panel called Xlr8 item list that looks like this. You then can click on the program you want to edit:



- c. You should see this dialog box asking what type of file it is. Since most basic programs do not have extensions, XLr8Editor will add in this case “.xbas” only locally and will not change your database names.



- d. You can change the default “xbas” option by going to Window>Preferences>U2logic Products and change the value from “xbas” to whatever you want:



e. In the main panel you should see the following program ready to edit:

f.

```

1 * x8UD $BASICTYPE "U"
2 $OPTIONS INFORMATION ; * x8UV
3 SUBROUTINE Acct_GlobalSub (PARAM1,PARAM2,PARAM3,PARAM4,RETURN.ID,METHOD)
4 * Copyright (c) 2008-2010, U2logic, Inc. All Right Reserved.
5 *****
6 PGM.NAME = "Acct_GlobalSub"
7 $INCLUDE XLR8Includes XLR8Param5.EQUATE
8 CALL XLR8OSSub(OS,OS.CMD,UNIVERSE,TELNET.IP,DIR.TYPE,USER.NO)
9 $INCLUDE XLR8Includes XLR8Company.EQUATE
10 $INCLUDE LOCAL.XLR8Includes ACCT.PAYABLES.EQUATE
11 $INCLUDE LOCAL.XLR8Includes CRM.CREDIT.TERM.CODES.EQUATE
12 $INCLUDE LOCAL.XLR8Includes ACCT.VENDORS.EQUATE
13 $INCLUDE LOCAL.XLR8Includes ACCT.JOURNALS.EQUATE
14 CALL XLR8OpenFilesSub(0,'ACCT.JOURNALS',ACCT.JOURNALS,PARAM5,RETURN.ID,'') ; IF RETURN.ID THEN F
15 CALL XLR8OpenFilesSub(0,'ACCT.VENDORS',ACCT.VENDORS,PARAM5,RETURN.ID,'') ; IF RETURN.ID THEN RET
16 CALL XLR8OpenFilesSub(0,'ACCT.PAYABLES',ACCT.PAYABLES,PARAM5,RETURN.ID,'') ; IF RETURN.ID THEN F
17 CALL XLR8OpenFilesSub(0,'CRM.CREDIT.TERM.CODES',CRM.CREDIT.TERM.CODES,PARAM5,RETURN.ID,'') ; IF
18 CALL XLR8OpenFilesSub(0,'XLR8Company',XLR8Company,PARAM5,RETURN.ID,'') ; IF RETURN.ID THEN RETUP
19 BEGIN CASE
20 CASE METHOD = 'PeriodBalances'
21 COMPANY.NO = PARAM1
22 GL.ACCOUNT = PARAM2
23 GOSUB PERIOD.BALANCES
24 CASE METHOD = 'GetPeriodDetail'
25 COMPANY.NO = PARAM1
26 GL.ACCOUNT = PARAM2
27 BEGIN.DATE = ICONV(PARAM3,'D')
28 END.DATE = ICONV(PARAM3,'D')
29 GOSUB CONVERT.PERIODS
30 GOSUB GET.PERIOD.DETAIL
31 CASE METHOD = 'GetConsolidated'
32 COMPANY.NO = PARAM1
33 CONSOLIDATED = PARAM2
34 GOSUB GET.CONSOLIDATED
35 CASE METHOD = 'ConvertPeriods'
36 COMPANY.NO = PARAM1
37 BEGIN.DATE = ICONV(PARAM2,'D')
38 END.DATE = ICONV(PARAM2,'D')

```

- g. You can use the tool bar for adding special characters, compiling, formatting and cataloging:

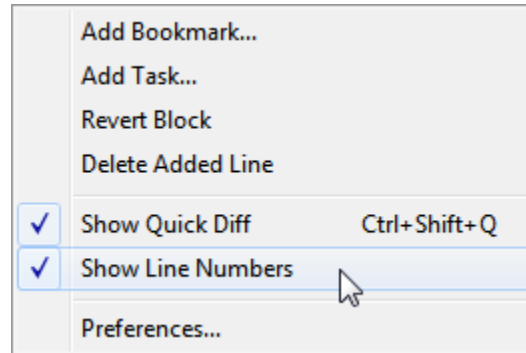


- h. You can right click on the source code to see this menu:

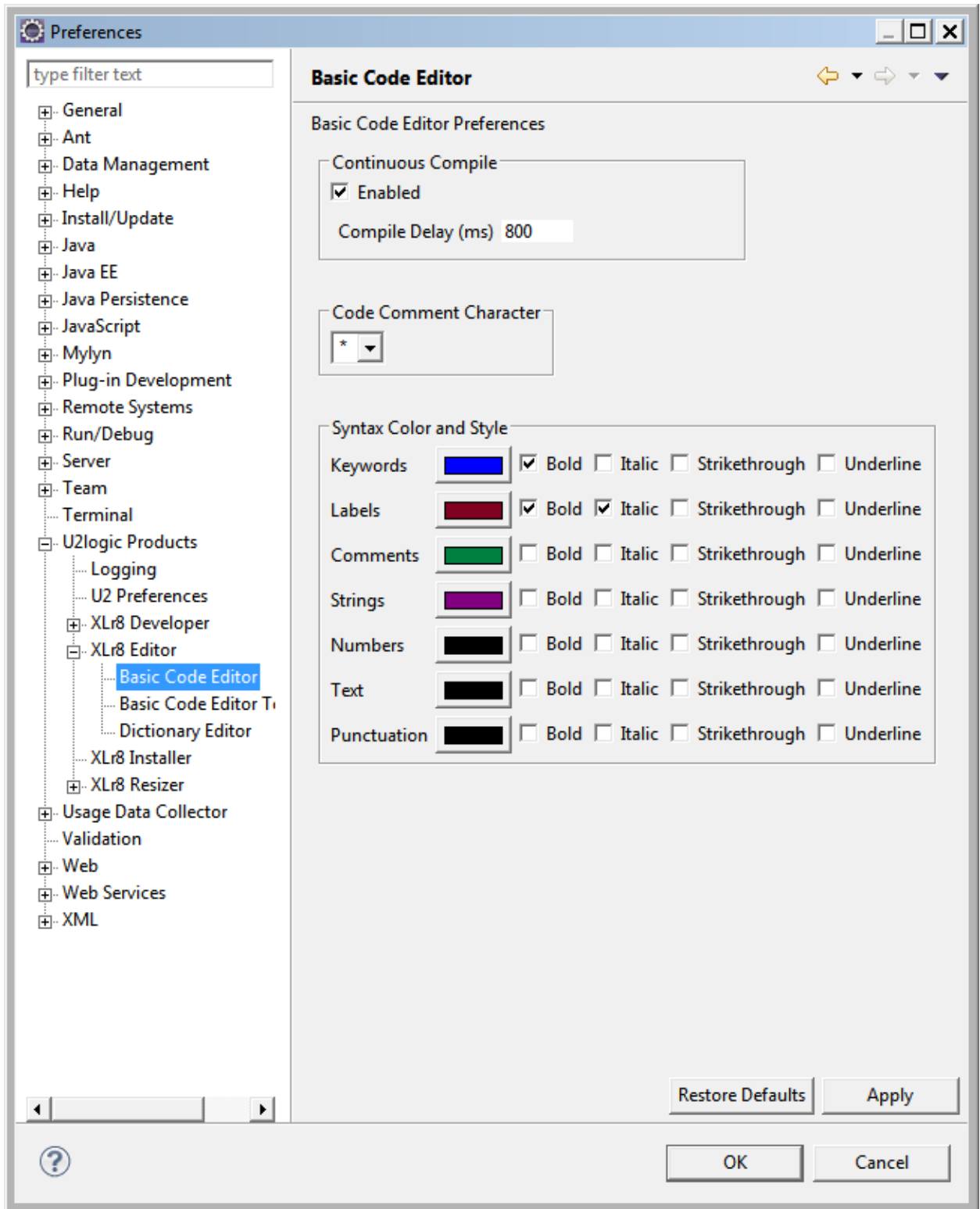
|                                 |                      |
|---------------------------------|----------------------|
| Undo                            | Ctrl+Z               |
| Revert File                     |                      |
| Save                            | Ctrl+S               |
| <b>Open With</b>                | ▶                    |
| <b>Show In</b>                  | <b>Alt+Shift+W</b> ▶ |
| Cut                             | Ctrl+X               |
| Copy                            | Ctrl+C               |
| <b>Paste</b>                    | <b>Ctrl+V</b>        |
| <b>Shift Right</b>              |                      |
| <b>Shift Left</b>               |                      |
| Remove the comment block        |                      |
| Comment code block              |                      |
| Compile Basic Program           | Alt+C                |
| Catalog Basic Program           | Ctrl+Shift+C         |
| Format Basic Program            | Ctrl+Shift+F         |
| Continous Compile Toggle        |                      |
| Open Include or CALL Subroutine | F3                   |
| Run As                          | ▶                    |
| Debug As                        | ▶                    |
| Profile As                      | ▶                    |
| Validate                        |                      |
| Team                            | ▶                    |
| Compare With                    | ▶                    |
| Replace With                    | ▶                    |
| <b>Preferences...</b>           |                      |
| Remove from Context             | Ctrl+Alt+Shift+Down  |



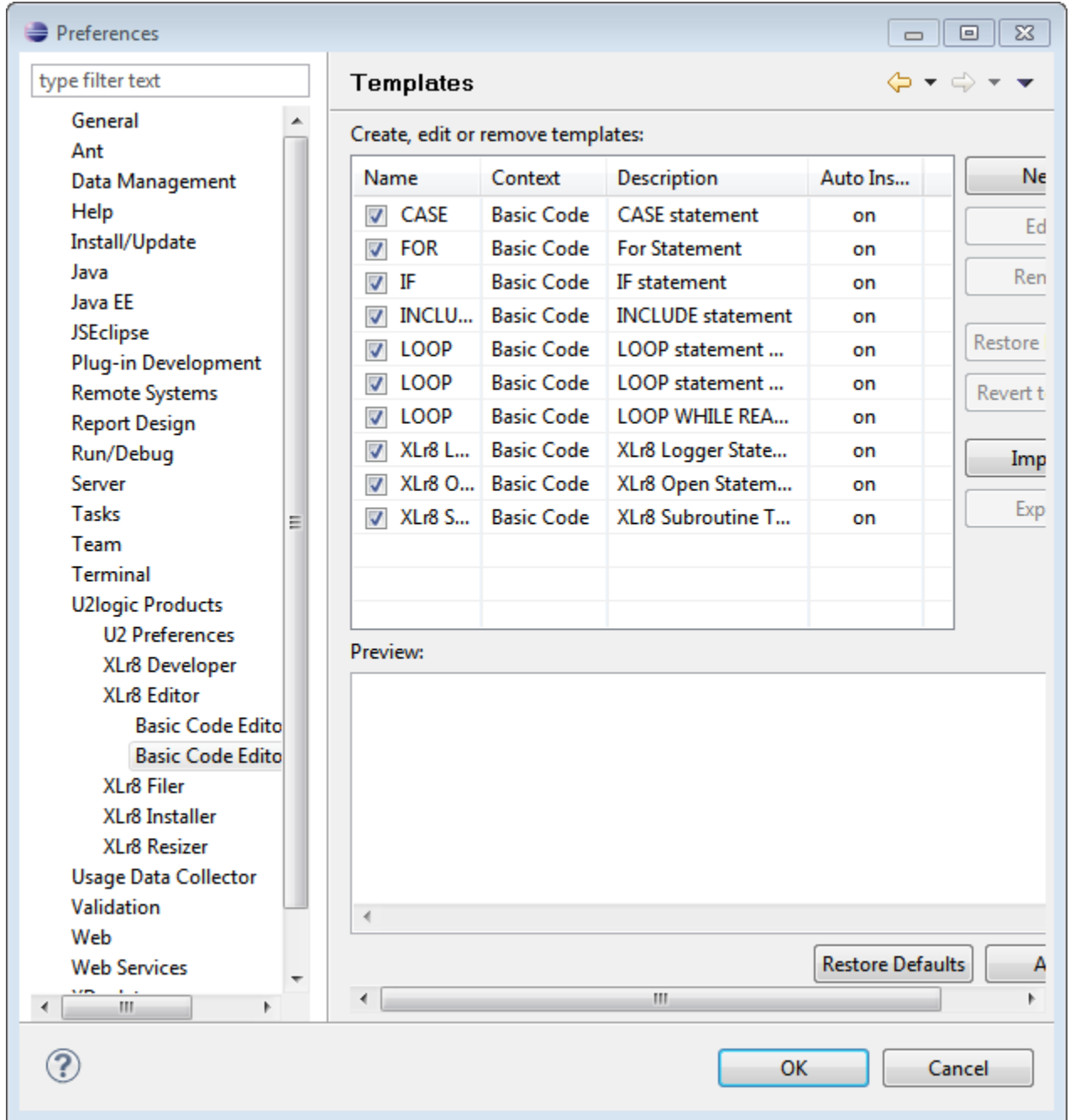
- i. To show line numbers click on the left column to get this menu or you can go to the preferences menu to change the options. We recommend that you have quick diff option turned on as well to changes in the vertical ruler:



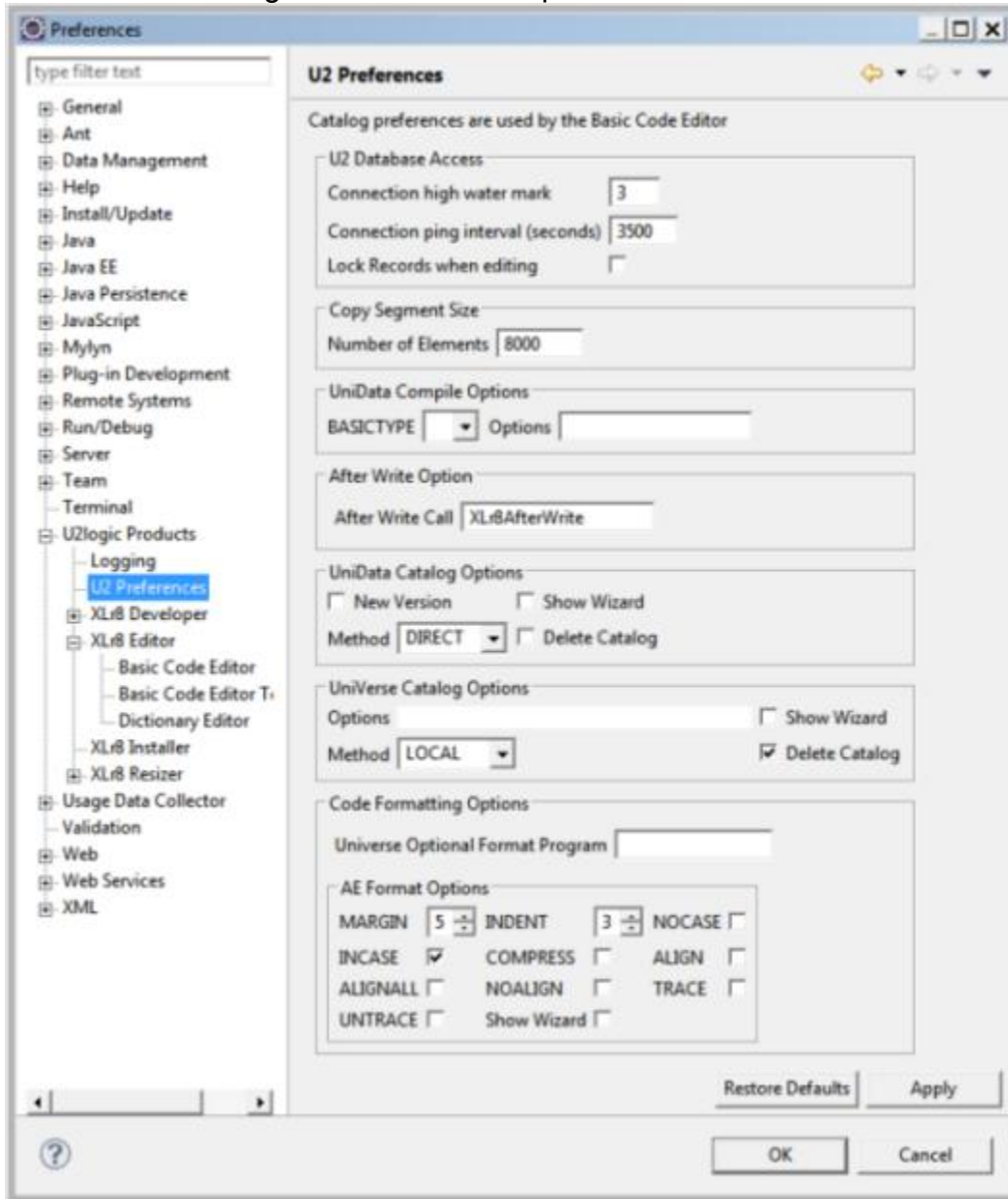
- j. To change colors or any other XLr8Editor first go the preferences options by click on the menu above or Window->Preferences:



k. You can add your own specialized templates:



- I. Under the U2 Preferences you can customize a lot of options:
  - i. Change your number of connections
  - ii. Change how many seconds before you ping you connection thus keeping it alive while not in use.
  - iii. Add locking when you are editing programs.
  - iv. Change your compile options for UniData.
  - v. Call an audit program after the write to the database.
  - vi. Modify the catalog options for UniVerse or UniData.
  - vii. Add your own formatter to Universe
  - viii. Change the “AE” format options on UniVerse or UniData



- m. Double clicking on variable will highlight all of the places where the variable is used. Notice the overview ruler on the right side shows where this variables are elsewhere in the code:

```

1 * x8UD $BASICTYPE "U"
2 $OPTIONS INFORMATION ; * x8UV
3 SUBROUTINE Acct_GlobalSub (PARAM1, PARAM2, PARAM3, PARAM4, RETURN.ID, METHOD)
4 * Copyright (c) 2008-2010, U2logic, Inc. All Right Reserved.
5 *****
6 PGM.NAME = "Acct_GlobalSub"
7 $INCLUDE XLr8Includes XLr8Param5.EQUATE
8 CALL XLr8OSSub(OS,OS.COMD,UNIVERSE,TELNET.IP,DIR.TYPE,USER.NO)
9 $INCLUDE XLr8Includes XLr8Company.EQUATE
10 $INCLUDE LOCAL.XLr8Includes ACCT.PAYABLES.EQUATE
11 $INCLUDE LOCAL.XLr8Includes CRM.CREDIT.TERM.CODES.EQUATE
12 $INCLUDE LOCAL.XLr8Includes ACCT.VENDORS.EQUATE
13 $INCLUDE LOCAL.XLr8Includes ACCT.JOURNALS.EQUATE
14 CALL XLr8OpenFilesSub(0,'ACCT.JOURNALS',ACCT.JOURNALS,PARAM5,RETURN.ID,'') ; IF RETURN.ID THEN F
15 CALL XLr8OpenFilesSub(0,'ACCT.VENDORS',ACCT.VENDORS,PARAM5,RETURN.ID,'') ; IF RETURN.ID THEN RET
16 CALL XLr8OpenFilesSub(0,'ACCT.PAYABLES',ACCT.PAYABLES,PARAM5,RETURN.ID,'') ; IF RETURN.ID THEN F
17 CALL XLr8OpenFilesSub(0,'CRM.CREDIT.TERM.CODES',CRM.CREDIT.TERM.CODES,PARAM5,RETURN.ID,'') ; IF
18 CALL XLr8OpenFilesSub(0,'XLr8Company',XLr8Company,PARAM5,RETURN.ID,'') ; IF RETURN.ID THEN RETUF
19 BEGIN CASE
20 CASE METHOD = 'PeriodBalances'
21 COMPANY.NO = PARAM1
22 GL.ACCOUNT = PARAM2
23 GOSUB PERIOD.BALANCES
24 CASE METHOD = 'GetPeriodDetail'
25 COMPANY.NO = PARAM1
26 GL.ACCOUNT = PARAM2
27 BEGIN.DATE = ICONV(PARAM3,'D')
28 END.DATE = ICONV(PARAM3,'D')
29 GOSUB CONVERT.PERIODS
30 GOSUB GET.PERIOD.DETAIL
31 CASE METHOD = 'GetConsolidated'
32 COMPANY.NO = PARAM1
33 CONSOLIDATED = PARAM2
34 GOSUB GET.CONSOLIDATED
35 CASE METHOD = 'ConvertPeriods'
36 COMPANY.NO = PARAM1
37 BEGIN.DATE = ICONV(PARAM2,'D')
38 END.DATE = ICONV(PARAM2,'D')

```

- n. Open Declaration or the F3 key will allow you to look at includes or Local/Direct cataloged programs.

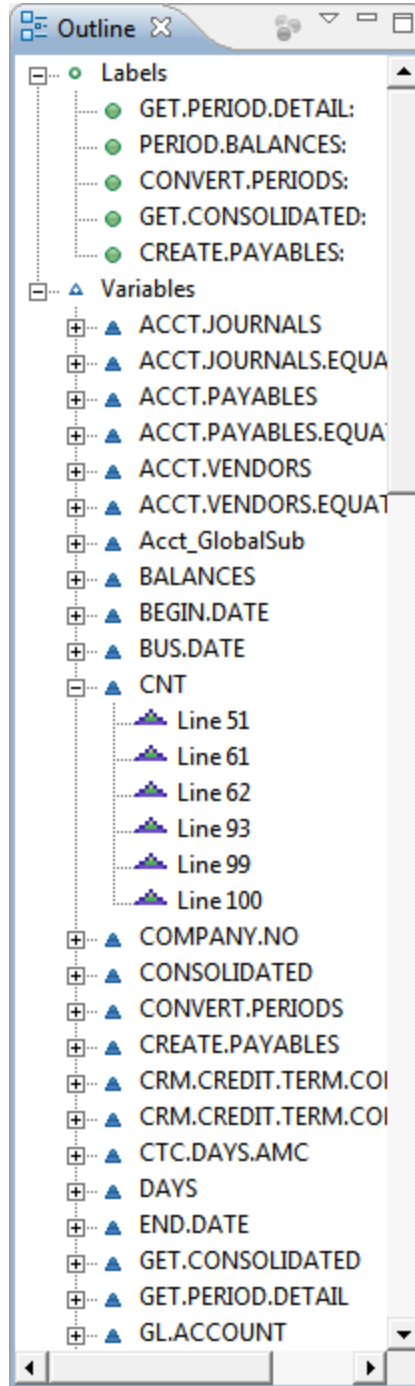
The screenshot shows a window titled 'XLr8Company.EQUATE' with a list of 37 EQUATE statements. Each statement is numbered and follows the format 'EQUATE XCO.FIELD\_NAME.AMC TO ID'. The fields listed include COMPANY.NAME, ADDRESS, FED.TAX.ID, STATE.TAX.ID, PERIOD.END, CUTOFF.DATE, BEGINNING.DATE, ENDING.DATE, QUARTER.END, QUARTER.TYPE, FISCAL.YEAR.END, CALENDAR.YEAR.END, PERIOD.CLOSE, GOOGLE.ADSENSE, SALES.TAX.MINOR, AP.AR.FLAG, POST.OVER.INVOICE, DETAIL.POST, GL.POST.ON.MANUAL, CUSTOM.INVOICE, USE.BANK.GL.CREDIT, ENCRYPT.PASSWORDS, ALLOW.CHECK.DELETE, SMTP.GATEWAY, SMTP.FROM.EMAIL, DISPATCH.CUBE.CHECK, DISPATCH.LENGTH.CHECK, COST.CENTER, PHONE, FAX, LOAD.AR.AMOUNT, REPLICATION.FLAG, GROUP.ID, GROUP.COMPANIES, SAAS.ACCOUNT, DMS.EXPIRE.CUSTOMER.FOLDERS, SALES.TYPE.FLAG, and CASH.BOOKING.CODE.

```

1 EQUATE XCO.COMPANY.NAME.AMC TO 1
2 EQUATE XCO.COMPANY.ADDRESS.AMC TO 2
3 EQUATE XCO.FED.TAX.ID.AMC TO 3
4 EQUATE XCO.STATE.TAX.ID.AMC TO 4
5 EQUATE XCO.PERIOD.END.AMC TO 5
6 EQUATE XCO.CUTOFF.DATE.AMC TO 6
7 EQUATE XCO.BEGINNING.DATE.AMC TO 7
8 EQUATE XCO.ENDING.DATE.AMC TO 8
9 EQUATE XCO.QUARTER.END.AMC TO 9
10 EQUATE XCO.QUARTER.TYPE.AMC TO 10
11 EQUATE XCO.FISCAL.YEAR.END.AMC TO 11
12 EQUATE XCO.CALENDAR.YEAR.END.AMC TO 12
13 EQUATE XCO.PERIOD.CLOSE.AMC TO 13
14 EQUATE XCO.GOOGLE.ADSENSE.AMC TO 14
15 EQUATE XCO.SALES.TAX.MINOR.AMC TO 15
16 EQUATE XCO.AP.AR.FLAG.AMC TO 16
17 EQUATE XCO.POST.OVER.INVOICE.AMC TO 17
18 EQUATE XCO.DETAIL.POST.AMC TO 18
19 EQUATE XCO.GL.POST.ON.MANUAL.AMC TO 19
20 EQUATE XCO.CUSTOM.INVOICE.AMC TO 20
21 EQUATE XCO.USE.BANK.GL.CREDIT.AMC TO 21
22 EQUATE XCO.ENCRYPT.PASSWORDS.AMC TO 22
23 EQUATE XCO.ALLOW.CHECK.DELETE.AMC TO 23
24 EQUATE XCO.SMTP.GATEWAY.AMC TO 24
25 EQUATE XCO.SMTP.FROM.EMAIL.AMC TO 25
26 EQUATE XCO.DISPATCH.CUBE.CHECK.AMC TO 26
27 EQUATE XCO.DISPATCH.LENGTH.CHECK.AMC TO 27
28 EQUATE XCO.COST.CENTER.AMC TO 28
29 EQUATE XCO.PHONE.AMC TO 29
30 EQUATE XCO.FAX.AMC TO 30
31 EQUATE XCO.LOAD.AR.AMOUNT.AMC TO 31
32 EQUATE XCO.REPLICATION.FLAG.AMC TO 32
33 EQUATE XCO.GROUP.ID.AMC TO 33
34 EQUATE XCO.GROUP.COMPANIES.AMC TO 34
35 EQUATE XCO.SAAS.ACCOUNT.AMC TO 35
36 EQUATE XCO.DMS.EXPIRE.CUSTOMER.FOLDERS.AMC TO 36
37 EQUATE XCO.SALES.TYPE.FLAG.AMC TO 37

```

- o. The outline shows you labels and variables for this program. You can click on either the labels or the variable name to go right to the line in the code.



- p. Code completion is done by type at least one characters and holding the CNTRL key and then pressing the SPACE key. The system will show you all of the matching variables, reserved words or labels. This routine reads and indexes all of your code you have locally in your workspace.

```

1  * x8UD $BASICTYPE "U"
2  $OPTIONS INFORMATION ; * x8UV
3  SUBROUTINE Acct_GlobalSub(PARAM1,PARAM2,PARAM3,PARAM4,RETURN.ID,METHOD)
4  * @ 2008-2012, U2logic, Inc. All Right Reserved.
5  *****
6  PGM.NAME = "Acct_GlobalSub"
7  $INCLUDE XLr8Includes XLr8Param5.EQUATE
8  $INCLUDE XLr8Includes XLr8Company.EQUATE
9  $INCLUDE LOCAL.XLr8Includes ACCT.PAYABLES.EQUATE
10 $INCLUDE LOCAL.XLr8Includes CRM.CREDIT.TERM.CODES.EQUATE
11 $INCLUDE LOCAL.XLr8Includes ACCT.VENDORS.EQUATE
12 $INCLUDE LOCAL.XLr8Includes ACCT.JOURNALS.EQUATE
13 CALL XLr8OpenFilesSub(0,'ACCT.JOURNALS',ACCT.JOURNALS,PARAM5,RETURN.ID,'') ; IF RETURN.ID THEN RETURN
14 CALL XLr8OpenFilesSub(0,'ACCT.VENDORS',ACCT.VENDORS,PARAM5,RETURN.ID,'') ; IF RETURN.ID THEN RETURN
15 CALL XLr8OpenFilesSub(0,'ACCT.PAYABLES',ACCT.PAYABLES,PARAM5,RETURN.ID,'') ; IF RETURN.ID THEN RETURN
16 CALL XLr8OpenFilesSub(0,'CRM.CREDIT.TERM.CODES',CRM.CREDIT.TERM.CODES,PARAM5,RETURN.ID,'') ; IF RETURN.ID THEN RETURN
17 CALL XLr8OpenFilesSub(0,'XLr8Company',XLr8Company,PARAM5,RETURN.ID,'') ; IF RETURN.ID THEN RETURN
18 ACCT.
19 BEGIN
20 CA ▲ ACCT.PAYABLES.EQUATE - variable
21 ▲ ACCT.PAYABLES - variable
22 ▲ ACCT.VENDORS.EQUATE - variable
23 CA ▲ ACCT.JOURNALS.EQUATE - variable
24 ▲ ACCT.JOURNALS - variable
25 ▲ ACCT.VENDORS - variable
26 ▲ ACCT.GENERAL.LEDGER.EQUATE - variable
27 ▲ ACCT.TOTAL - variable
28 ▲ ACCT.VAL - variable
29 CA ▲ ACCT.VALUE - variable
30 ▲ ACCT.VENDOR.TYPE.CODES.EQUATE - variable
31 ▲ ACCT.INVOICES.EQUATE - variable
32
33
34
35 CASE METHOD = 'ConvertPeriods'
36 COMPANY.NO = PARAM1
37 BEGIN.DATE = ICONV(PARAM2,'D')
38 END.DATE = ICONV(PARAM3,'D')
39 GOSUB CONVERT.PERIODS
    
```