

**XLR8**



# eclipse

**XLR8 Eclipse Training Guide**

---

A **U2logic** PUBLICATION

© 2011, U2logic, Inc.

## **XLr8 Eclipse Training Guide**

Doug Averch

Version 1.0

Created March 2011

Updated March 5, 2011

Printed in the United States of America

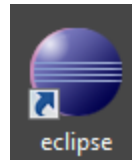
U2logic, 13963 Powhaton Road, Brighton, Co 80603

All rights reserved. This product and its documentation is protected by copyright and are distributed using licenses. This document and the confidential information contained within it may in no part be distributed, reproduced, stored in or introduced into a retrieval system, or transmitted in any form or means without the express written permission of U2logic, Inc.

Neither U2logic, nor the author, assume responsibility for errors or omissions within the user guide, or for damages resulting from use of the information presented. U2logic reserves the right to change information described herein.

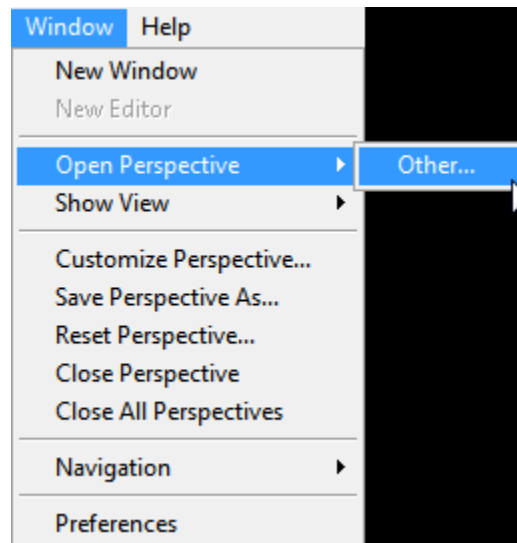
## I. Introduction

After you have download Eclipse you should find an icon on your desktop. Double click on the icon to start Eclipse

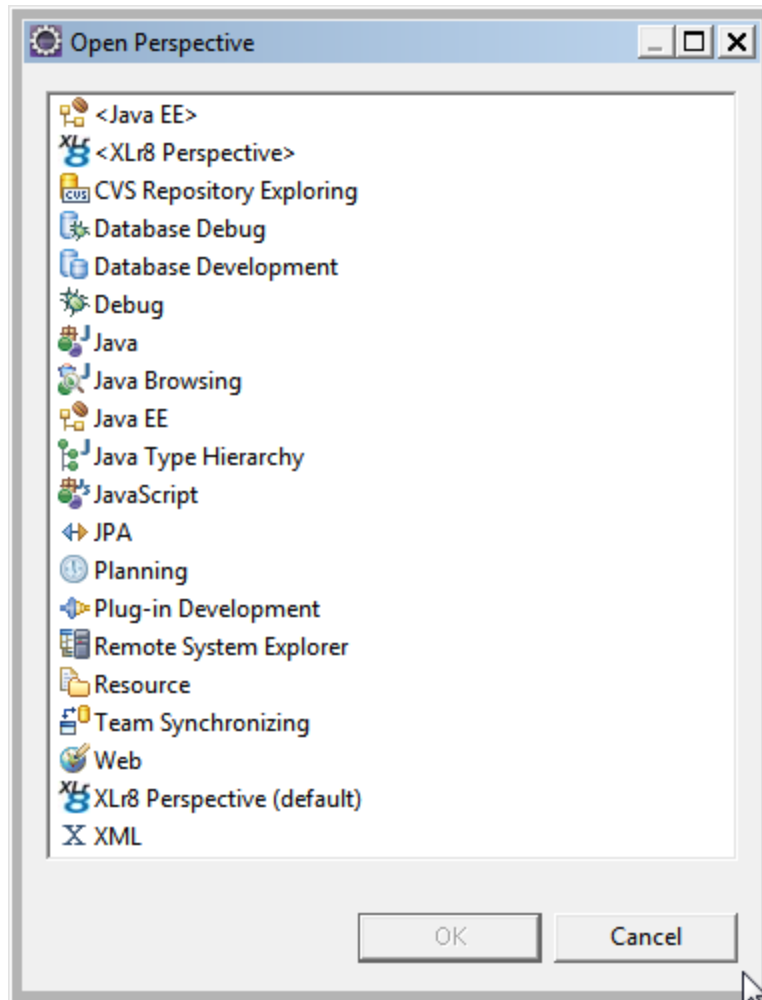


## II. What are Perspectives

Go to the menu item Window and click on other:



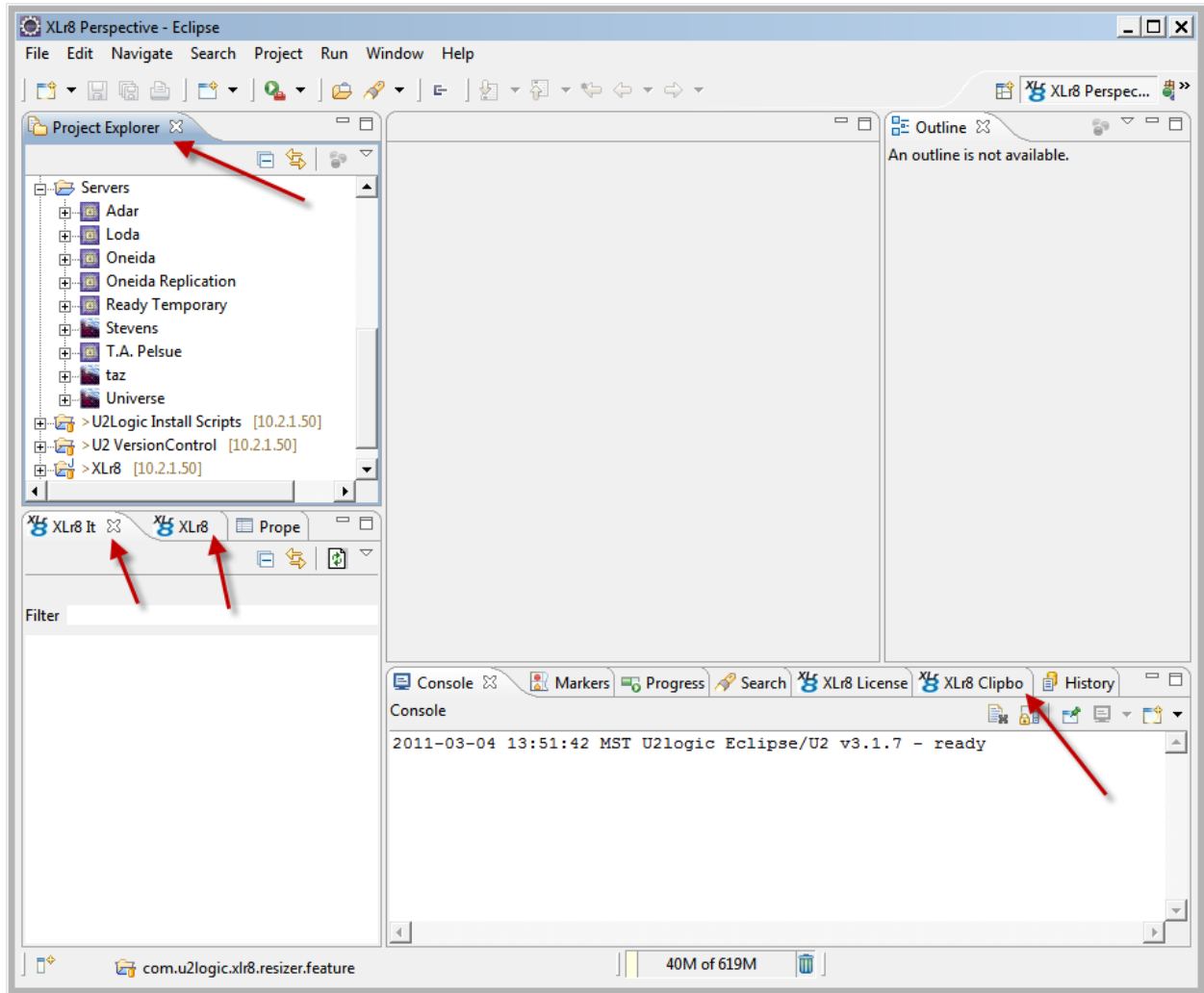
These are the perspective you can open from this selection:



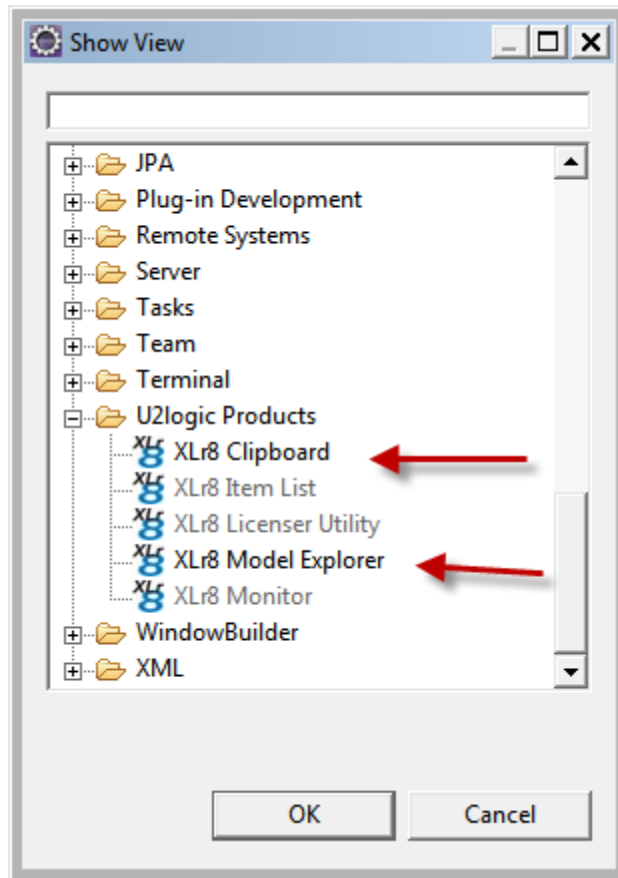
In the above selection, you can see there are many perspectives you can choose from that define you layout.

### III. What are views?

Below are some of the views from the perspective XLr8:



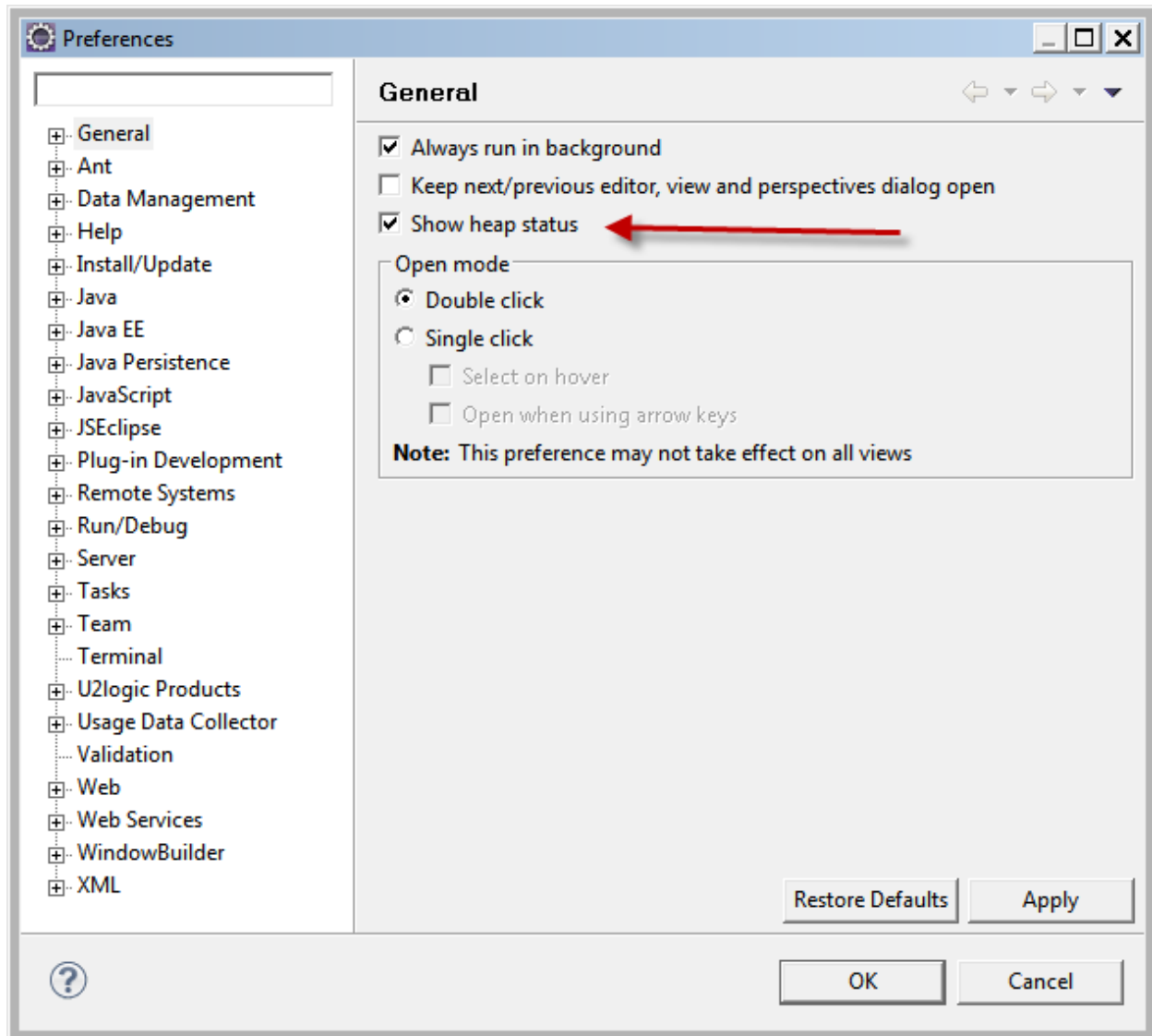
You can add other view by going to the menu item Window->Show View->Other:



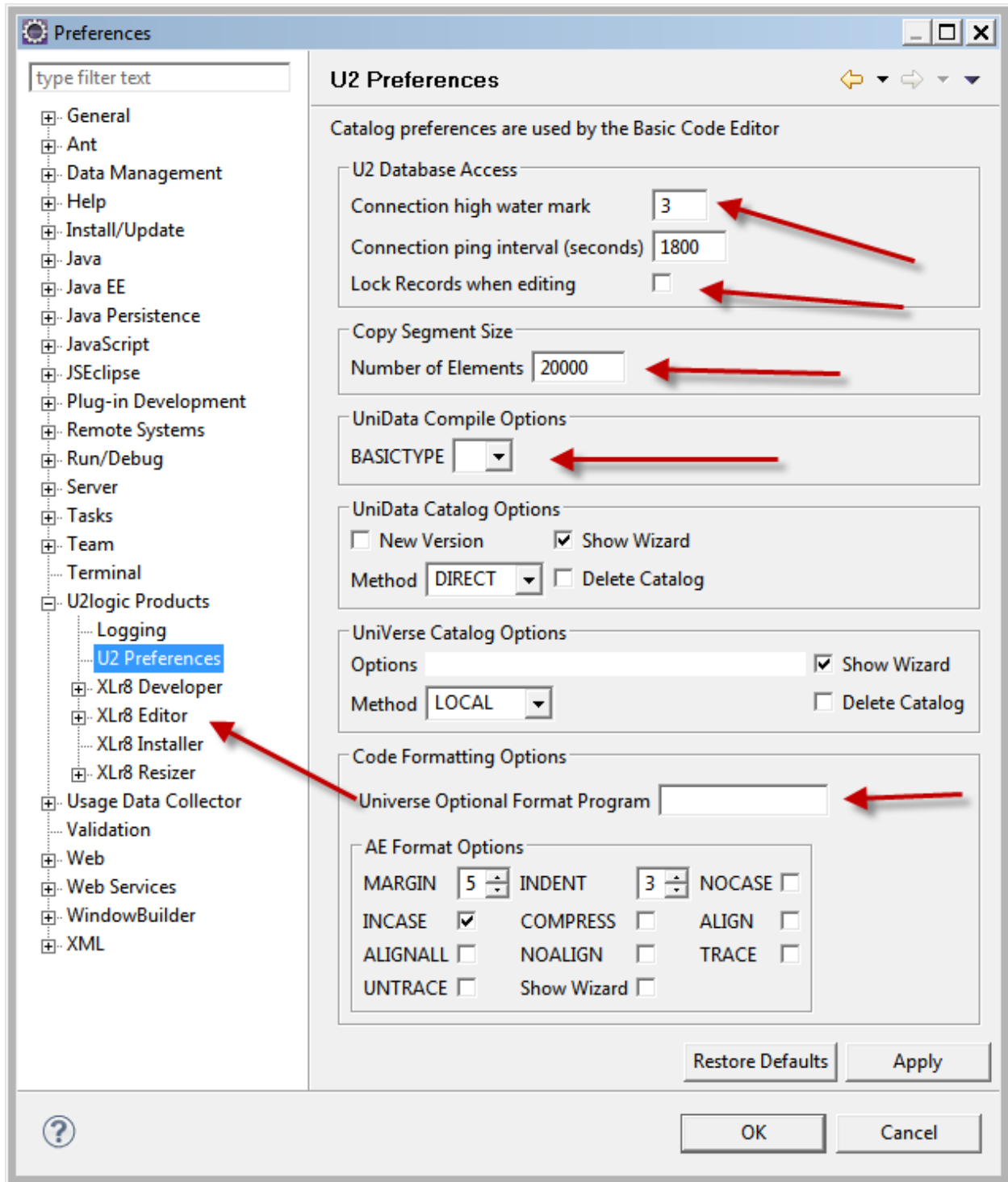
You can add any view that is not grayed out like XLr8 Clipboard.

## IV. What are Preferences?

In the menu item Window->Preferences you will see this if you click on the General Preferences:

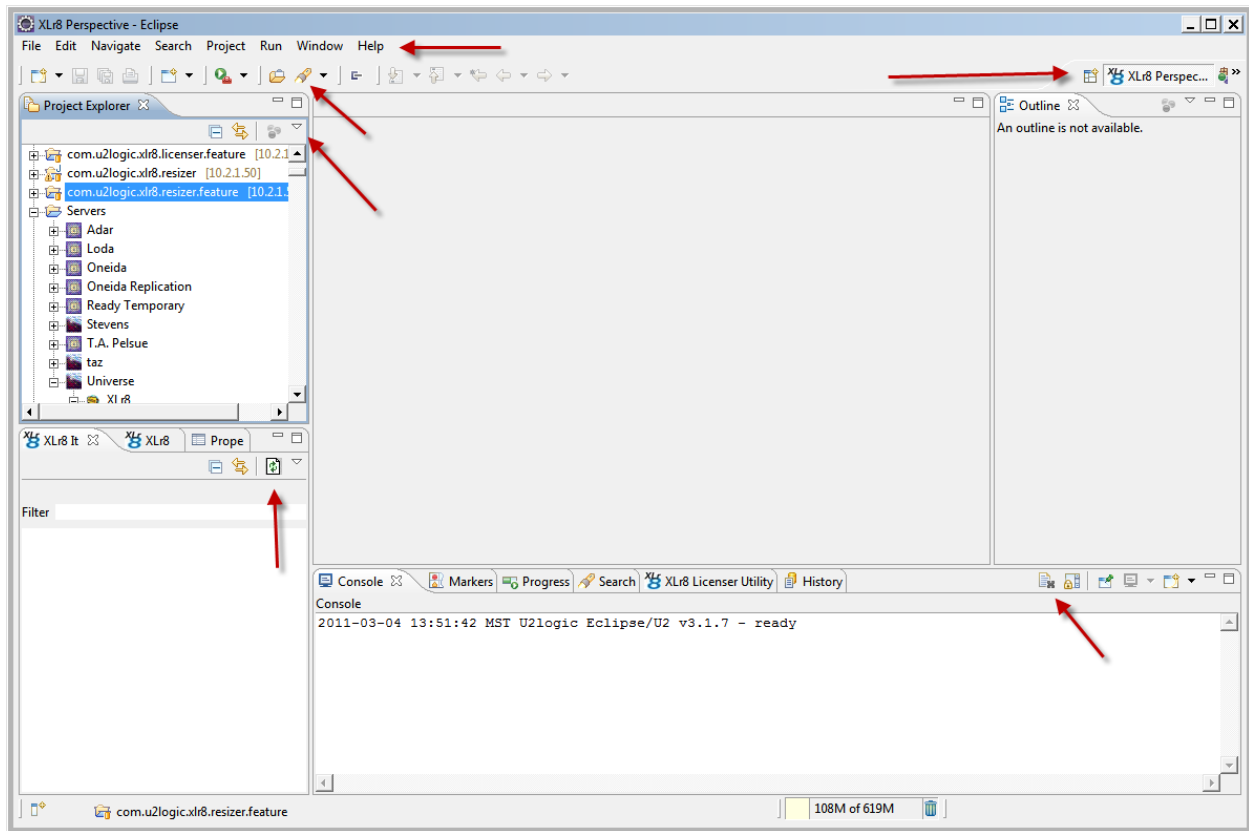


When using the XLr8 plug-in you will have these preferences to choose from:





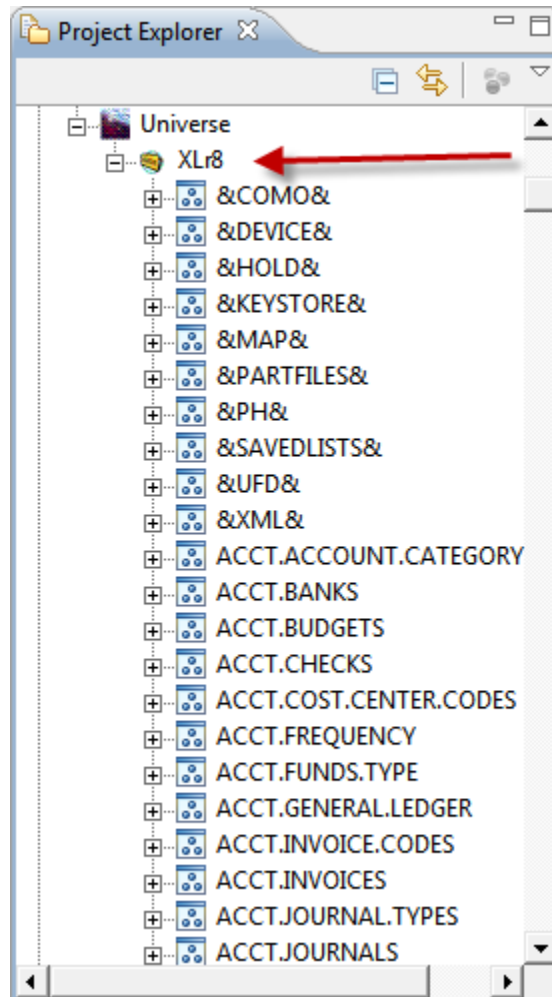
## V. Where are the Toolbars and Menu Icons?



The above graphic show within the XLr8 Perspective a few of the menu bars, icons and that are in every view and perspective.

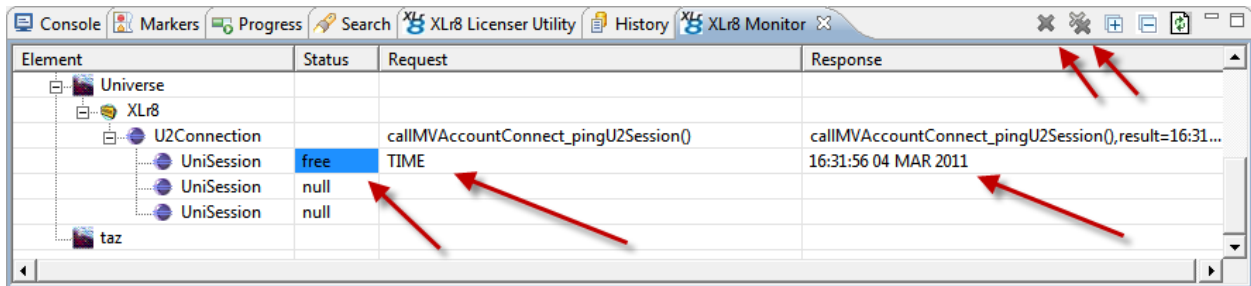
## VI. Opening the Servers Project

After you double click on the account icon all of the files build a tree format:

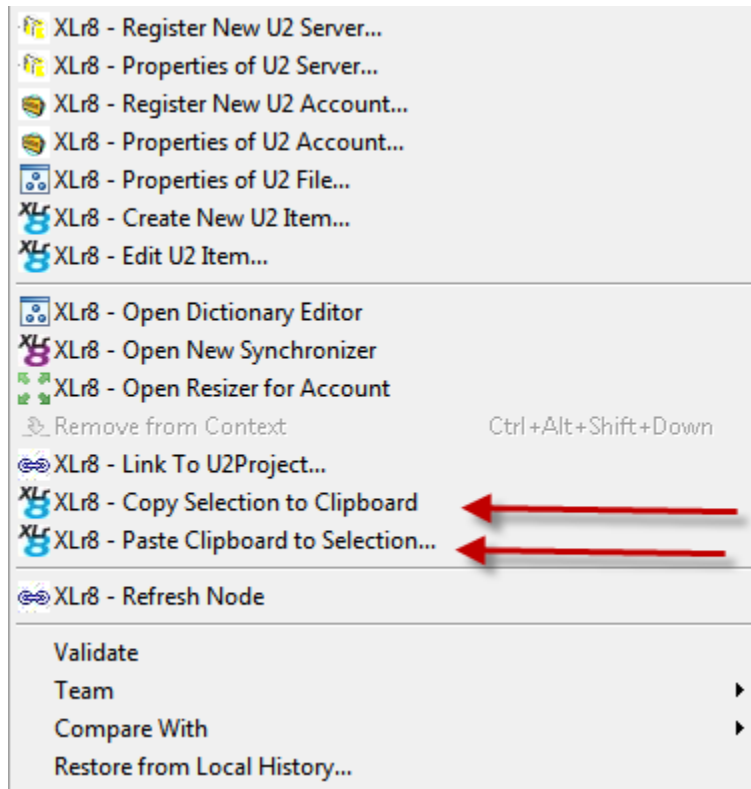


## VII. XLr8 Monitor View

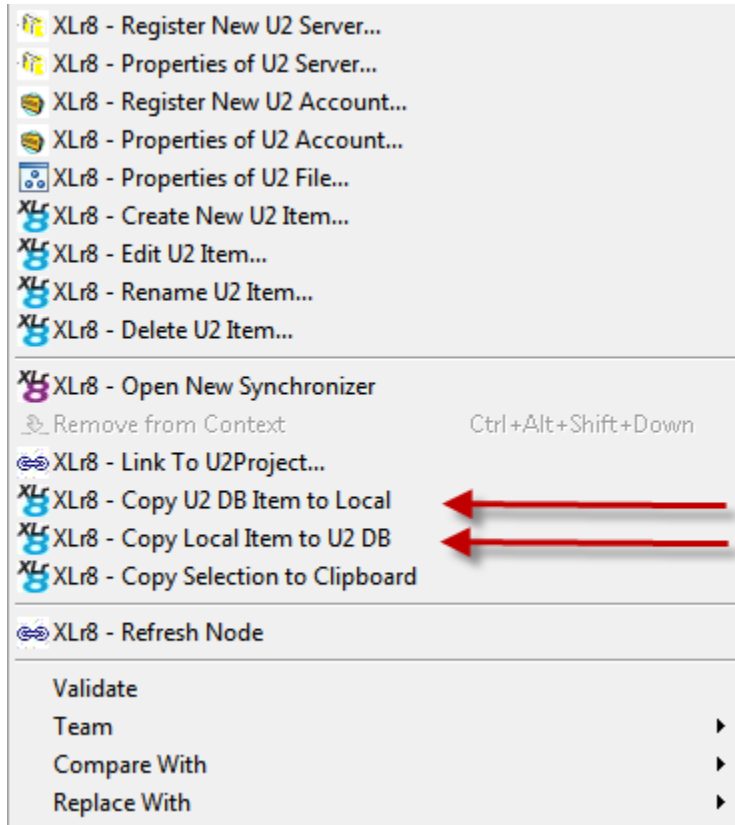
This is the XLr8 monitor view. The view allows you to kill connections. This view shows you what was last requested and the response back from the server.



## VIII. Copy and Paste

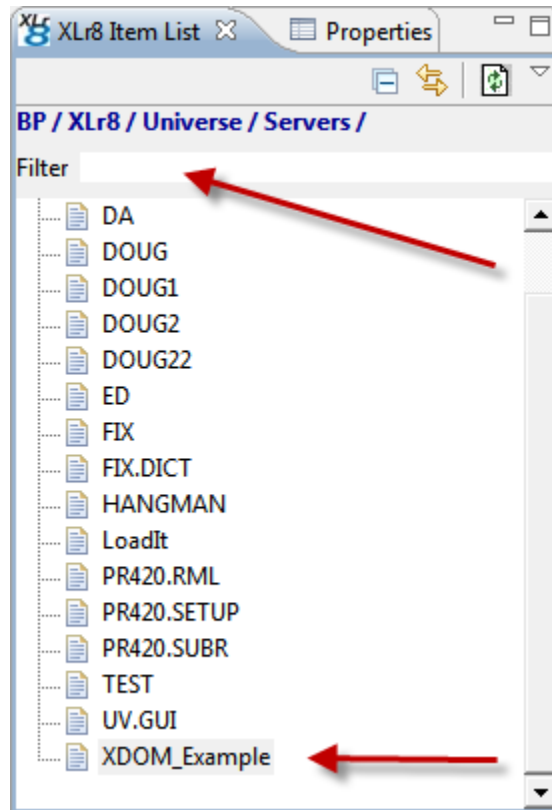


# IX. Copy from Database to Local

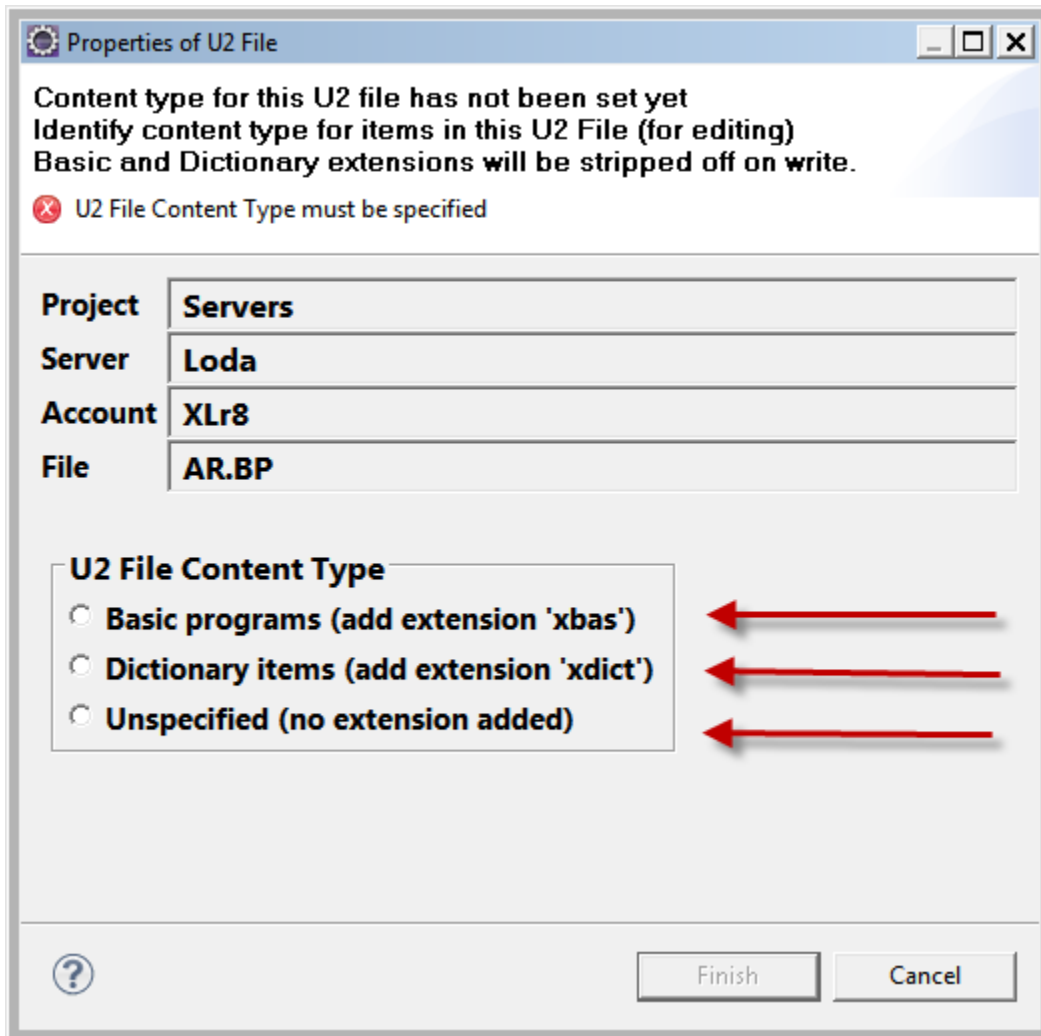


## X. Editing Programs

After you double click on a file you would like to edit you the XLR8 Item List will open up:



When you try to edit a program you will be asked to answer this modal window:



This is the program pane with key words highlighted:

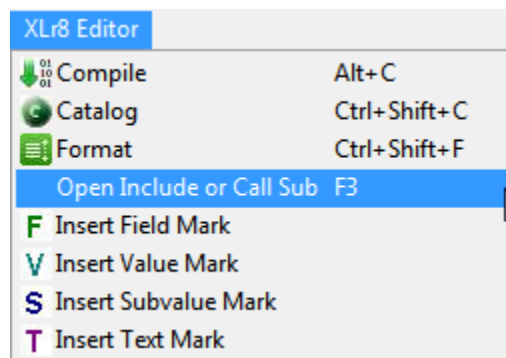
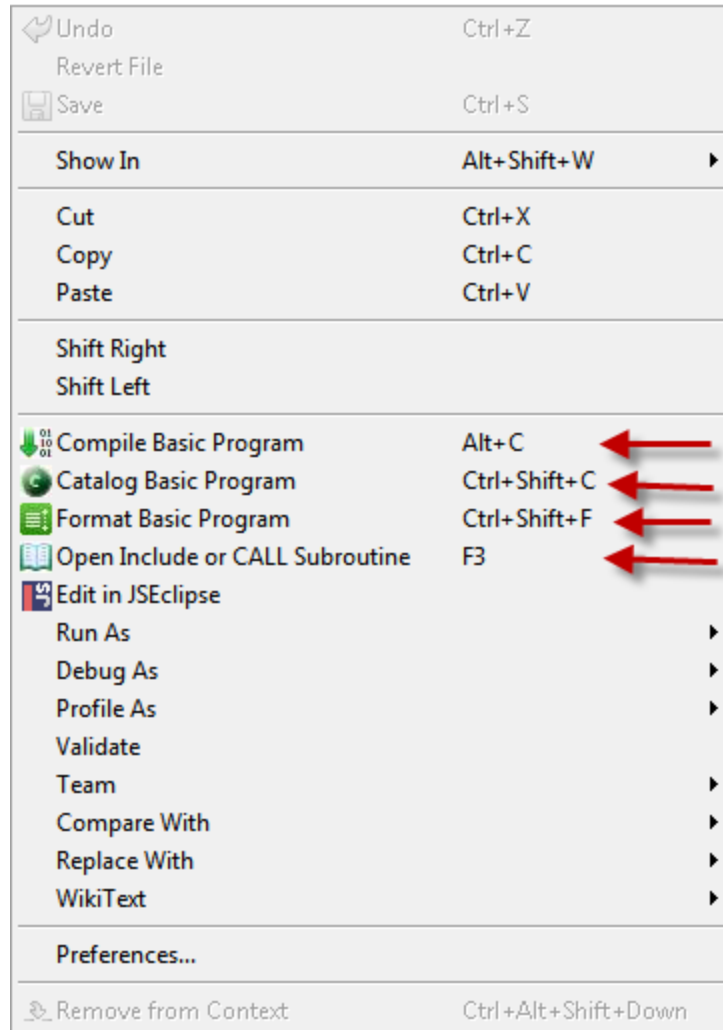
```

1  $OPTIONS INFORMATION
2  $INCLUDE UNIVERSE.INCLUDE XML.H
3  $INCLUDE XLr8Includes XLr8Publish.EQUATE
4  OPEN '','PUB.TEMP' TO XLr8Publish ELSE STOP 'XLr8Publish'
5  PUBLISHER = 'Publisher' ; SUBSCRIBER = 'Subscriber' ; DB = 'UD'
6  ELEMENTS = 'Id,TargetFileName,Dictionary,TargetItemId,Action,'
7  ELEMENTS := 'ServerTag,AccountTag,SourceFileName,SourceItemName,'
8  ELEMENTS := 'SourceItemFilter,Comments'
9  CONVERT ',' TO @VM IN ELEMENTS
10 MAX.ELEMENTS = DCOUNT(ELEMENTS,@VM)
11 FILE.ARRAY = "" ; COMPILE.ARRAY = "" ; TIME1 = 3600
12 FILE.NAME = "%XML%/InstallationActions.xin"
13 RTN.CODE = XDOMOpen(FILE.NAME,XML.FROM.FILE,XDOM)
14 IF RTN.CODE # XML.SUCCESS THEN
15     CRT 'Unable to open ':FILE.NAME
16     STOP
17 END
18 XPATH = 'InstallationInstructions/Elements'
19 RTN.CODE = XDOMLocate(XDOM,XPATH,',',FND.NODE)
20 IF RTN.CODE # XML.SUCCESS THEN
21     CRT 'Unable to find ':XPATH
22 END ELSE
23     NEW.NODE = FND.NODE
24     LOOP
25         RTN.CODE = XDOMLocateNode(NEW.NODE, XDOM.NEXT.SIBLING.WITH.SAME.NAME, 1,XDOM.ELEMENT.NODE, N
26     WHILE RTN.CODE = XML.SUCCESS
27         ELE.ARRAY = ""
28         FOR X = 1 TO MAX.ELEMENTS
29             RTN.CODE = XDOMLocate(NEW.NODE,ELEMENTS<1,X>,',',FND1.NODE)
30             IF RTN.CODE # XML.SUCCESS THEN
31                 CRT 'Node ':ELEMENTS<1,X>:' not found'
32             END ELSE
33                 RTN.CODE = XDOMLocateNode(FND1.NODE, XDOM.CHILD, XDOM.FIRST.CHILD, XDOM.TEXT.NODE, TEX
34             IF RTN.CODE # XML.SUCCESS THEN
35                 ELE.ARRAY<1,X> = ''
36             END ELSE
37                 RTN.CODE = XDOMGetNodeValue(TEXT.NODE, TEXT.VALUE)
38                 ELE.ARRAY<1,X> = TEXT.VALUE
39     END

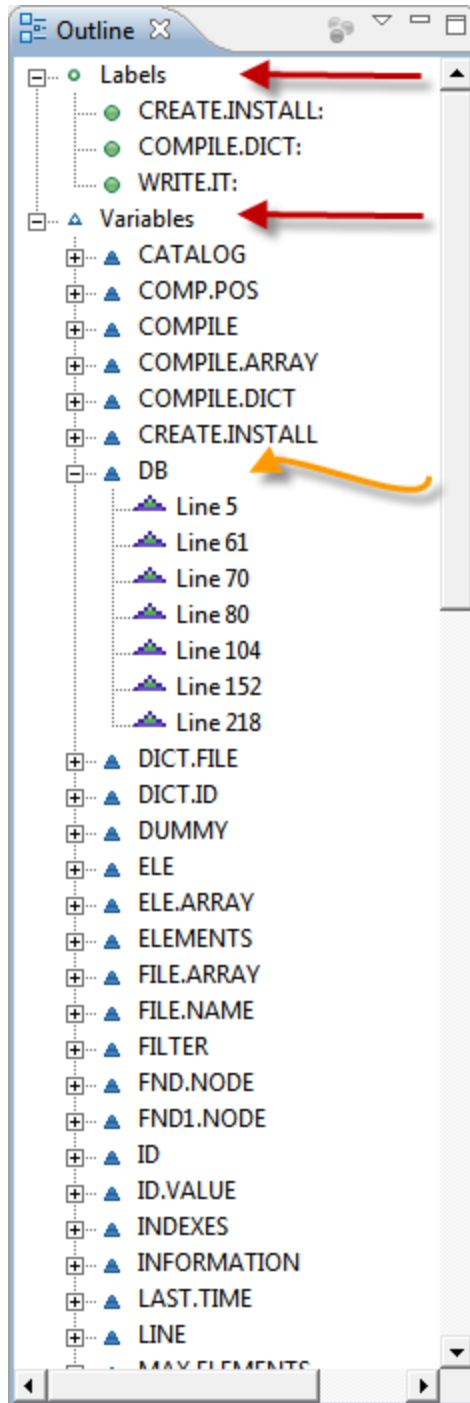
```



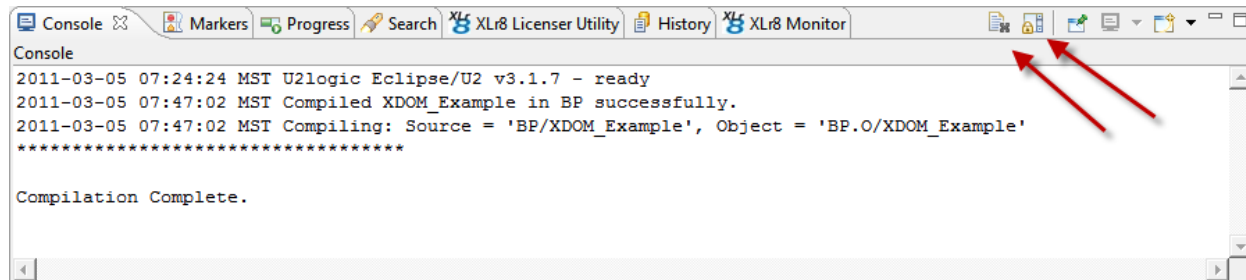
If you right click on the main view you will see this menu:



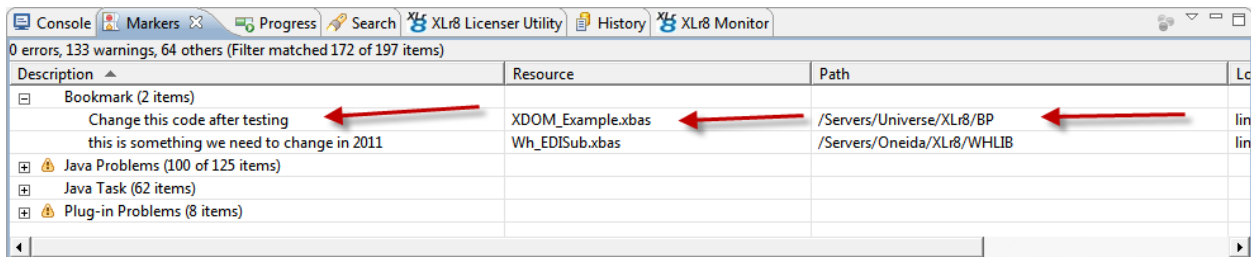
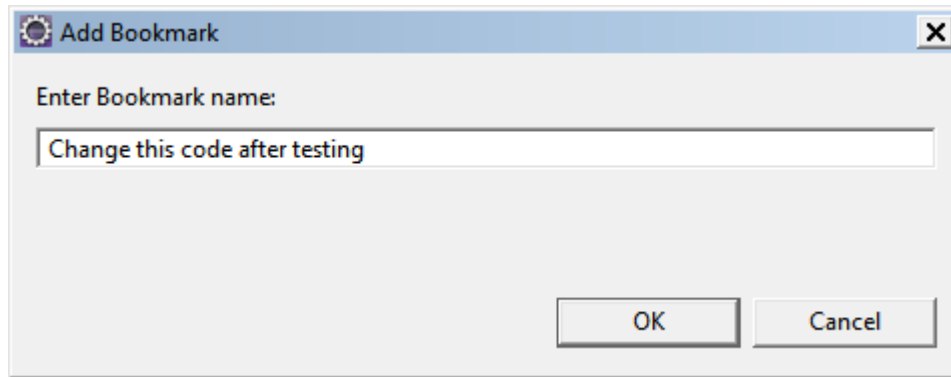
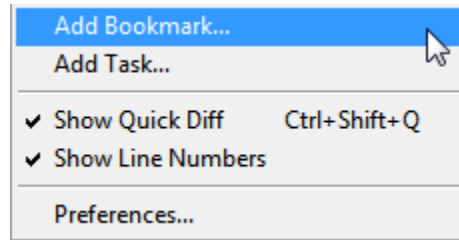
# XI. Outline View



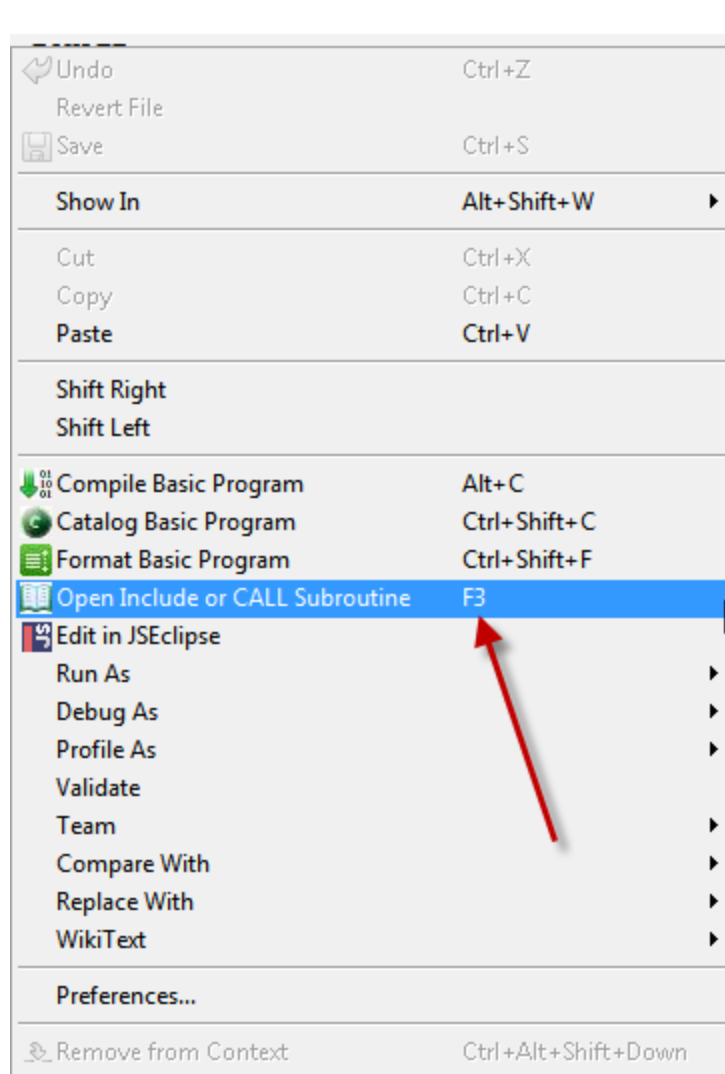
## XII. Console View



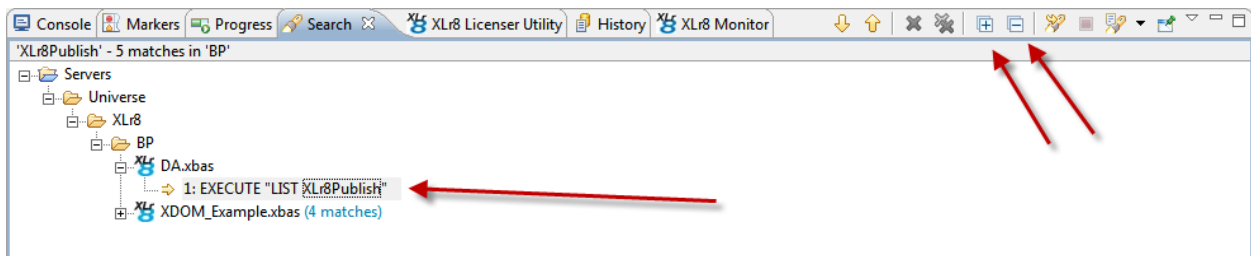
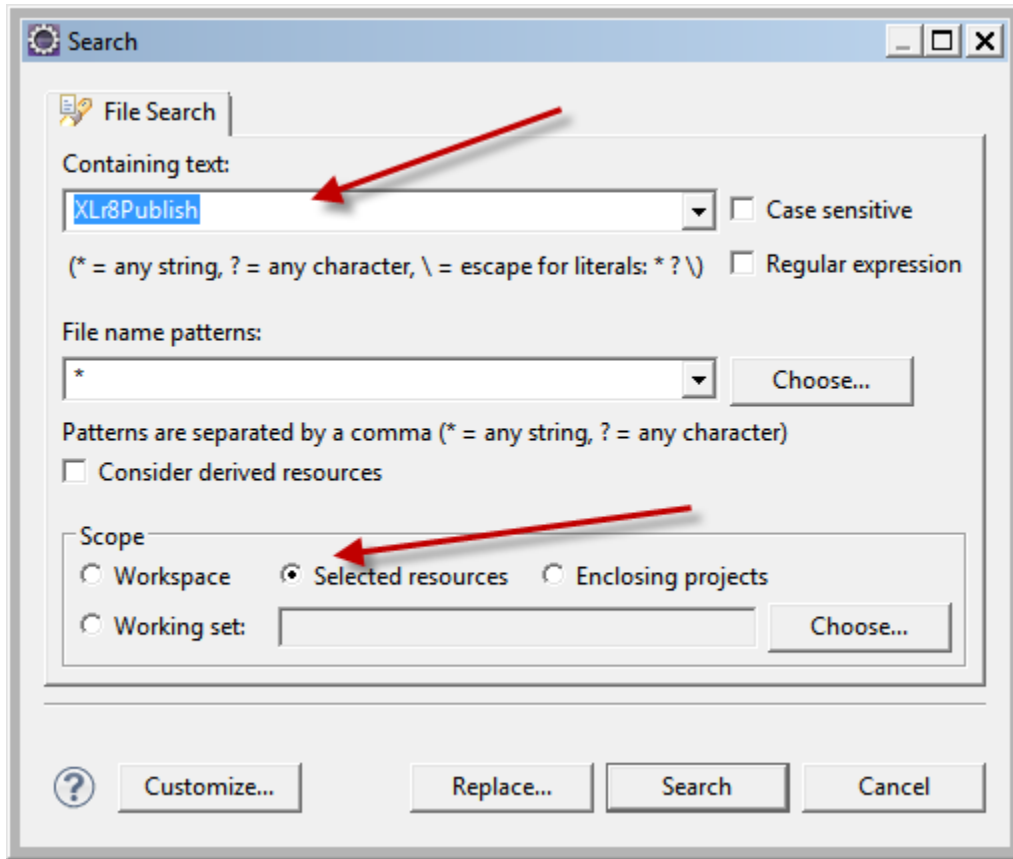
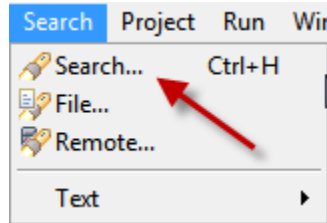
### XIII. Adding Bookmarks



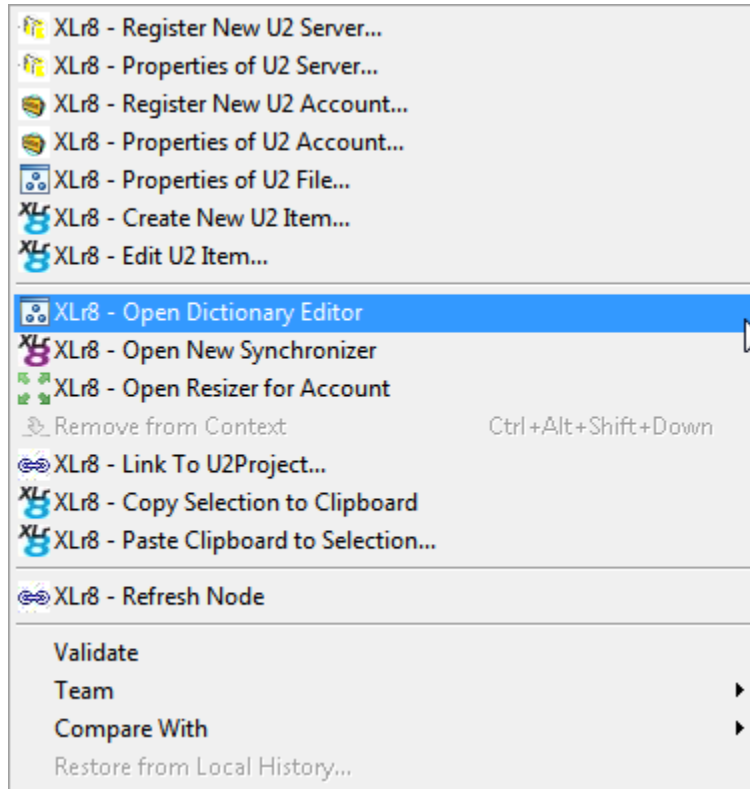
# XIV. Opening Up Includes or Subroutines



# XV.Search



## XVI. Dictionary Editor



U2logic Dictionary Editor v3.1.7

Save and Compile All   Save and Compile Selected   Validate All

New Type D   New Type I   New Type V   New Type PH   New Type A   New Type S   New Type X   New Generic   Double click

@ID	Code	F#	Conv	Column Heading	Wd...	S/...	Phrase name	SQL Da...
\$NEXTNO	1008							
CONTACT.NEXTNO	1001							
@ID	D	0		CUSTOMERS	11R	S		
CUS.NAME	D	1		NAME	35L	S		
BILL.ADDRESS	D	2		BILL.ADDRESS	25L	M		
LAST.ACTIVITY	D	3	D4/	LASTýACTIVITY	10R	S		
MAIL.TO	D	4		MAIL TO	15L	M		
SHIPPING.ADDRESS	D	5		SHIPPING.ADDRESS	20L	M		
PHONE	D	6		PHONE	12R	S		
FAX	D	7		FAX	10R	S		
ACCOUNT.TYPE	D	8		ACCOUNTýTYPE	5L	S		
SALESPERSON	D	9		SALESPERSON	10L	S		
GENERAL.INFO	D	10		GENERAL.INFO	20L	MV		
TAXABLE	D	11		TAXABLE	2L	S		
EMAIL	D	12		EMAIL	15L	S		
CREDIT.TERMS	D	13		CREDIT.TERMS	4L	S		
DATE.OPENED	D	14	D4/	DATE.OPENED	10R	S		
CONTACT.NAME	D	15		CONTACT NAME	15L	MV	CONTACT.ASS...	
C.PHONE	D	16		CONTACTýPHONE	15L	MV	CONTACT.ASS...	
PROGRAMMER	D	17		PROGRAMMER	20L	M		
IP.BILLING.CYCLE	D	18		IP.BILLING.CYCLE	2R	MV	ASSOC.IP	
EFFECTIVE.RATE	D	19	MD2	EFFECTIVE RATE	8R	M		
OVERTIME.RATE	D	20	MD2	OVERTIME RATE	8R	MV		
SUB.TOTAL	D	21		SUBýTOTAL	2R	S		
COMPANY	D	22		COMPANY	2R	S		
CREDIT.HIGH	D	23	MD2	CREDITýHIGH	8R	S		
NON.PROJECT.RATE	D	24	MD2	HOURLY.RATE	8R	S		
CREDIT.LIMIT	D	25	MD2	CREDIT.LIMIT	8R	S		
WEB.ADDRESS	D	26		WEB.ADDRESS	20L	S		
RESERVED BY	D	27		RESERVED BY	15L	S		